

GEO® 2
DIVE COMPUTER
OPERATING MANUAL

CONTENTS

NOTICES.....	3	DIVE MODE FEATURES	23
FEATURES/FUNCTIONS AND WATCH MODE	5	BAR GRAPHS	24
DISPLAY ICONS	6	TLBG (NORM/FREE).....	24
ABBREVIATIONS/TERMS	6	VARI (NORM/GAUG).....	24
OVERVIEW	7	ALGORITHM.....	24
MENU SYSTEM	7	CONSERVATIVE FACTOR (CF).....	24
BACKLIGHT	7	DEEP STOP (DS).....	24
AUDIBLE ALARM.....	8	SAFETY STOP (SS)	25
PC INTERFACE	8	DIVE TIME REMAINING (DTR)	25
POWER SUPPLY	9	NDC (No Deco DTR)	25
WATCH MAIN (DEFAULT) TIME	9	OTR (O2 Dive Time Remaining)	25
MAIN TIME.....	9	NORM DIVE MODE	26
WATCH MENU	10	NO DECO MAIN AND ALTS	27
WATCH ALT	10	DEEP STOP (DS).....	27
SHOW DUAL TIME.....	10	SAFETY STOP (SS)	27
WATCH CDT (COUNTDOWN TIMER)	10	DECOMPRESSION	28
CHRONOGRAPH.....	11	CV (CONDITIONAL VIOLATION).....	29
DAILY ALARM	11	DV 1 (DELAYED VIOLATION 1).....	29
SET T MENU (TIME).....	12	DV 2 (DELAYED VIOLATION 2).....	29
Set Date Format	12	DV 3 (DELAYED VIOLATION 3).....	29
Set Hour Format	12	VGM (VIOLATION GAUGE MODE).....	29
Select Default Time	12	HIGH PO2	30
Set Dual Time Differential	12	HIGH O2.....	30
Set Time of Day.....	13	GAS SWITCHING	31
Set Date	13	DIGITAL GAUGE MODE	32
DIVE COMPUTER OPERATING MODES	14	GAUG SURF MAIN.....	33
NORM SURFACE MODES	15	GAUG SURF ALTS	33
NORM SURF MAIN.....	16	GAUG SURF MENU	33
NORM SURF ALTS.....	16	GAUG DIVE MAIN AND ALTS	34
FLY/SAT TIME (NORM/GAUG)	16	DV 3 (DELAYED VIOLATION 3).....	34
PLAN MODE (NORM).....	17	FREE DIVE MODE.....	35
LOG MODE (NORM/GAUG).....	17	FREE SURF MAIN	36
SET F MENU (FO2, NORM)	18	FREE SURF ALTS	36
Set FO2 Gas 1 (2).....	19	FREE SURF MENU.....	36
Set FO2 50% Default	19	FREE CDT (Countdown Timer).....	36
SET A MENU (ALARMS, NORM/GAUG)	20	FREE SET FA MENU (Free Alarms).....	37
Set Audible Alarm.....	20	EDT (Elapsed Dive Time) Alarm	37
Set Depth Alarm.....	20	DA (Depth Alarms).....	37
Set EDT Alarm.....	20	FREE DIVE MAIN AND ALT	38
Set TLBG Alarm	20	FREE DIVE ALARMS	38
Set DTR Alarm	20	REFERENCE	39
Set PO2 Alarm.....	20	PC INTERFACE	40
SET U MENU (UTILITIES).....	21	CARE AND CLEANING	40
Set Wet Activation	21	INSPECTIONS AND SERVICE	40
Set Units	21	BATTERY REPLACEMENT	41
Set DS (NORM Deep Stop).....	21	ALTITUDE SENSING AND ADJUSTMENT.....	42
Set SS (NORM Safety Stop).....	21	ADDITIONAL INFORMATION PERTAINING TO FREE MODE	42
Set Algorithm (NORM).....	21	TECHNICAL DATA	43
Set CF (Conservative Factor, NORM)	21	PZ+ ALGORITHM NDL CHART	44
Set GLO (Backlight Duration).....	22	DSAT ALGORITHM NDL CHART	44
Set SR (Sampling Rate)	22	SPECIFICATIONS.....	45
SET M (DIVE OP MODE).....	22	INSPECTION/SERVICE RECORD	47
HISTORY MODE (NORM/GAUG).....	22	OCEANIC WORLD WIDE	47
SERIAL NUMBER.....	22		

NOTICES

LIMITED TWO-YEAR WARRANTY

For details, refer to the Product Warranty Registration Card provided. Register on line at www.OceanicWorldwide.com

COPYRIGHT NOTICE

This operating manual is copyrighted, all rights are reserved. It may not, in whole or in part, be copied, photocopied, reproduced, translated, or reduced to any electronic medium or machine readable form without prior consent in writing from Oceanic/2002 Design.

GEO 2 Operating Manual, Doc. No. 12-5210
© 2002 Design, 2011
San Leandro, CA USA 94577

TRADEMARK, TRADE NAME, AND SERVICE MARK NOTICE

Oceanic, the Oceanic logo type, GEO 2, the GEO 2 logo, Air Time Remaining (ATR), Diver Replaceable Batteries, Graphic Diver Interface, Tissue Loading Bar Graph (TLBG), Pre Dive Planning Sequence (PDPS), Set Point, Control Console, OceanLog, and Dual Algorithm are all registered and unregistered trademarks, trade names, and service marks of Oceanic. All rights are reserved.

PATENT NOTICE

U.S. Patents have been issued, or applied for, to protect the following design features:

Data Sensing and Processing Device (U.S. Patent no. 4,882,678). Other patents pending. User Settable Display (U.S. Patent no. 5,845,235) is owned by Suunto Oy (Finland).

DECOMPRESSION MODEL

The programs within the GEO 2 simulate the absorption of nitrogen into the body by using a mathematical model. This model is merely a way to apply a limited set of data to a large range of experiences. The GEO 2 dive computer model is based upon the latest research and experiments in decompression theory. **Still, using the GEO 2, just as using the U.S. Navy (or other) No Decompression Tables, is no guarantee of avoiding decompression sickness, i.e. "the bends."** Every diver's physiology is different, and can even vary from day to day. No machine can predict how your body will react to a particular dive profile.

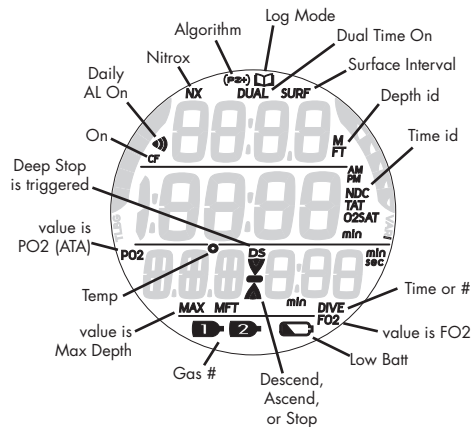
Welcome
to
OCEANIC
and
THANK YOU
for choosing the
GEO 2

FEATURES/FUNCTIONS

AND

WATCH MODE

DISPLAY ICONS



ABBREVIATIONS/TERMS

- | | |
|--------------------------------|---------------------------------------|
| ACTIV = Activation | M = Meters (depth) |
| AL = Alarm | MAX = Maximum |
| ALT = Alternate | MIN (min) = Minutes (time) |
| ATA = Atmospheres Absolute | MPM = Meters Per Minute |
| AUD = Audible | NDC = No Deco DTR |
| BATT (BAT) = Battery | NDL = No Deco Limit |
| CDT (CD) = Countdown Timer | NO = Number |
| CHG = Change | NO-D = No Decompression |
| CONSERV = Conservative Factor | NORM = Normal Dive Mode |
| CV = Conditional Violation | O2 = Oxygen |
| DA = Depth Alarm | O2SAT = % O2 |
| DECO = Decompression | OTL (OTR) = O2 Limit (DTR) |
| DFLT = Default | PDPS = Pre Dive Planning Sequence |
| DS = Deep Stop | PO2 = Partial Pressure of O2 (ATA) |
| DSAT = Algorithm type | PZ+ = Algorithm type |
| DTR = Dive Time Remaining | SAFE = Safety (stop) |
| DURA = Duration (backlight) | SAT = Time to Desaturate |
| DV = Delayed Violation | SEC (sec) = Seconds (time) |
| EDT = Elapsed Dive Time | SEL = Select |
| EL = Elevation (altitude) | SI = Surface Interval |
| FO2 = Fraction of Oxygen (%) | SN = Serial Number |
| FORM = Format (date, time) | SS = Safety Stop |
| FPM = Feet Per Minute | SR = Sampling Rate |
| FREE = Free Dive Mode | SURF = Surface |
| FT = Feet (depth) | SWCH = Switch (gas) |
| GAUG = Digital Gauge Dive Mode | TAT = Total Ascent Time (deco) |
| GLO = Glow (backlight) | TLBG (TBG) = Tissue Loading Bar Graph |
| HR = Hour | TMR = Timer |
| HIST = History | VARI = Variable Ascent Rate Indicator |
| LO = Low (battery) | VGM = Violation Gauge Mode |
| | VIO = Violation |

OVERVIEW

The GEO 2 is a unique Watch/Dive Computer featuring >>

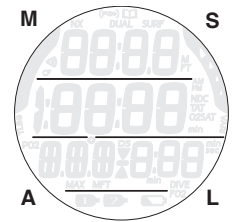
- 4 Control Buttons
- 10 Menus
- 34 Set Selections
- Increase/Decrease Set Values
- 4 Operating Modes
- 2 Nitrox Gas Mixes
- 28 Warnings/Alarms
- Dual Watch Time
- Dual Algorithm
- No Deco Deep Stop
- No Deco Safety Stop
- Gauge Depths to 400 FT/120 M
- Gauge Dive Run Timer
- Altitude Compensation
- NDL Conservative Factor
- Variable Ascent Rate
- PC Settings Upload/Data Download
- Audible Alarm with flashing LED
- User Replaceable Battery
- User Upgradeable Firmware

INTERACTIVE CONTROL CONSOLE

The Interactive Control Console utilizes 4 control buttons that allow you to maneuver through the GEO 2's unique system of menus.

The buttons will be referred to as M, S, A, and L.

- Upper/Left >> M (mode, minus)
- Upper/Right >> S (select, save)
- Lower/Left >> A (advance, access)
- Lower/Right >> L (light)



MENU SYSTEM

The LCD viewing area is used to display alpha numeric messages and measured values as well as Menu type systems for selection of settings and various auxiliary functions.

There are 10 Menus that include the -

- Watch Menu
- Set T Menu
- NORM Menu
- GAUG Menu
- FREE Menu
- Set F Menu
- Set A Menu
- Set M Menu
- Set U Menu
- Set FA Menu

Each Menu has a start (first) selection and a stop (last) selection. Upon entering a Menu, movement through it begins at the start (first) selection, then continues in a rolling manner showing one selection at a time.

- The sample at the left shows how a menu would look if all of the selections would be displayed on one screen.

GAUG SURF MENU
SURF MAIN
SURF ALT 1
SURF ALT 2
FLY
LOG
SET A
SET U
SET M
HISTORY
SN

Sample Menu (all selections shown)

Menu button action >>

- A (< 2 sec) - to access and step forward through menu selections
- A (hold) - to scroll forward through menu selections
- M (< 2 sec) - to step backward through menu selections
- M (2 sec) - to revert to Main, or move between Watch and DC modes
- S (< 2 sec) - to access or save selections
- S (2 sec) - to step back to previous selection

Pressing A (< 2 sec) while viewing the last selection in the menu will revert to the first selection (such as Watch or Surface Main).

Pressing M (< 2 sec) while viewing the Surface Main will jump to the last menu selection (such as Set T or SN), then continued presses will step back through menu items.

BACKLIGHT

To activate the Backlight at any time >> press the L button.

- The Backlight will activate and illuminate the display for button depression time* plus the Duration time set (0, 5, or 10 seconds), for a maximum of 20 seconds.
(*The Backlight will turn Off if L is depressed for more than 10 seconds.)
- Press L again to activate as desired.

Extensive use of the backlight reduces estimated battery life. Also, the backlight does not operate during a low battery condition or when the GEO 2 is connected to a PC.

AUDIBLE ALARM

While operating in NORM or GAUG Mode the Audible will emit 1 beep per second for 10 seconds when alarms strike, unless it is set Off. During that time, the Audible can be acknowledged and silenced by pressing the S button (less than 2 seconds).

A LED Warning Light, on the lower end of the housing, is synchronized with the Audible and flashes as the Audible sounds. It will turn Off when the Alarm is silenced. The Audible and LED will not be active if the Audible is Set Off (a group A setting).

FREE Dive Mode has its own set of Alarms which emit 3 short beeps either 1 or 3 times which cannot be acknowledged or set Off.

Situations that will activate the NORM/GAUG 10 second Alarm include -

*** Items activate only in NORM mode.*

- Descent deeper than the Depth Alarm Set Point selected.
- Dive Time Remaining at the Set Point selected**.
- Elapsed Dive Time at the Set Point selected.
- PO2 at the Set Point selected**.
- High O2 of 300 OTU (100%)**.
- TLBG at the Set Point selected**.
- Ascent Rate exceeds 60 FPM (18 MPM) when deeper than 60 FT (18 M), or 30 FPM (9 MPM) at 60 FT (18 M) and shallower.
- Entry into Decompression Mode (Deco)**.
- Conditional Violation (above a required Deco Stop Depth for less than 5 minutes)**.
- Delayed Violation (above a required Deco Stop Depth for more than 5 minutes)**.
- Delayed Violation (a Deco Stop Depth greater than 60 FT/18 M is required)**.
- Delayed Violation (Max Operating Depth is exceeded).
- A Gas Switch would expose the diver to PO2 => 1.60 ATA**.
- Watch Daily Alarm reaches time set (disabled during Dive Modes).
- Watch Mode Countdown Timer reaches 0:00.

A single short beep (which cannot be disabled) sounds when -

- After 5 minutes on the surface after the Violation dive.

3 short beeps (which cannot be disabled) sound when -

- Ascent Rate is 51 to 60 FPM (15.1 to 18 MPM) when deeper than 60 FT (18 M), or 26 to 30 FPM (7.5 to 9 MPM) at 60 FT (18 M) and shallower.
- FREE Dive Elapsed Dive Time Alarm (3 beeps every 30 seconds if set On).
- FREE Dive Depth Alarms 1, 2, 3 (set sequentially deeper) - each 3 beeps 3 times.
- FREE Dive TLBG Alarm (Caution zone, 4 segments) - 3 beeps 3 times.
- Entry into Deco during a FREE Dive (Violation) - 3 beeps 3 times.
- Free Dive Mode Countdown Timer reaches 0:00 - 3 beeps 3 times.

During the following NORM Dive situations, the 10 second continuous tone will be followed by a 5 second steady beep that will not turn off when acknowledged -

- Ascent above a Deco Stop for more than 5 minutes.
- Deco requires a Stop Depth deeper than 60 FT/18 M or deeper.
- Upon Surfacing during a Conditional Violation.

PC INTERFACE

Interface with a PC, to allow uploading settings and downloading data, is accomplished by connecting the GEO 2 to a PC USB Port using the special USB Interface Cable.

The software program together with the USB Driver required is on the Oceanlog CD, and can be downloaded from the OceanicWorldwide web site. The program's HELP** serves as the user manual which can be printed for personal use.

***Prior to attempting to download data from your GEO 2 or upload settings to it, review the HELP section of the Oceanlog program. Recommended is to print those sections of HELP that you consider appropriate for your Interface activities.*

The settings upload portion of the Oceanlog program can be used to set/change the Main Time, Date, Set A group (Alarms), Set U group (Utilities), and FREE mode items using the same Interface System. FO2 must be set using the control buttons.

Information available for retrieval (download) from the GEO 2 to the PC download portion of the program includes dive data such as number, surface interval time, maximum depth, elapsed dive time, no deco status, start date/time, lowest temperature under water, sampling rate, dive profile, and set points.

The Oceanlog program also allows upgrade of select versions of the GEO 2's firmware (operating system software) after which the GEO 2 resets all operating data. Since the upgrades require reset of the GEO 2, they are blocked during 24 hours after dives.

POWER SUPPLY

- Battery >> (1) 3 vdc, CR2430, Lithium battery.
- Shelf life >> up to 7 years (when shipped from factory in Deep Sleep mode).
- Use life >> 1 year or 300 dive hours if (2) 1 hour dives per dive day.
- Replacement >> user replaceable (annual recommended).

Low Battery on surface

<= 2.75 volts (warning level)

- Backlight is completely disabled.
- Battery icon (shell with inner bar) appears solid (Fig. 1 a).
- Watch and DC functions continue to be available.

<=2.50 volts (Too Low - alarm level)

- All Dive Computer operations cease and the unit operates only as a Watch.
- If in DC mode, the battery icon flashes for 5 seconds and operation reverts to Watch Time with the icon flashing (Fig. 2) until the Battery is changed or voltage cannot sustain operation (< 2.35 volts), then the graphics CHG and BAT alternate until the Battery is changed or voltage drops to the level at which operation cannot be maintained.

Low Battery during dive

<= 2.75 volts (warning level)

- Backlight is completely disabled.
- All DC functions continue to be available.
- Battery icon is not displayed on the dive mode screens.
- Battery icon (shell with inner bar) appears solid upon entry into Surface Mode.

<= 2.50 volts (Too Low - alarm level)

- Backlight is completely disabled.
- All DC functions continue to be available during the dive.
- Battery icon is not displayed on the dive mode screens.
- Upon entry into Surface Mode, the Battery icon (shell only with no inner bar) flashes and the graphics CHG and BATT alternate for 5 seconds (Fig. 3) then operation reverts to Watch Time.



Fig. 1 - SURFACE MAIN (low battery warning)



Fig. 2 - WATCH (low battery alarm)

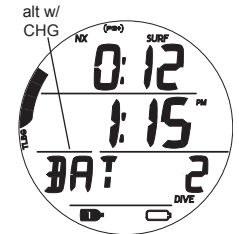


Fig. 3 - SURF MAIN (low battery alarm during dive)

WATCH MODE

WATCH MAIN (DEFAULT) TIME

Selection of Main (Default) Time is a Set T menu item.

Time of day and date can be set when either Home or Away time is selected as the default.

Main Time is the current time at your home location and is normally selected as the Watch Default Time.

Away Time, set by Hour Differential, is the current Time at a remote travel location. Upon arrival at the location, Away Time can be interchanged with Main Time to make it the Default Time while visiting the travel location.

Dual Time is the second, or differential time, that can be displayed simultaneously with Main Time with set On. It is a +/- Hour Differential based on the Time that is set while at home or the opposite if set while away.

Once Dual Time (a differential) is set, it will automatically change when Time of Day is changed. When Away Time is selected to be the Watch Default Time (while at a travel location), it will be changed directly when Time of Day is changed and Home Time will then change by a differential opposite the one set for Dual Time.

MAIN (Default) TIME, information includes (Fig. 4A/B):

- > Alarm (speaker) icon, if Daily Alarm is set on
- > Dual Time (hr:min) with DUAL icon, if set on
- > Main (Default) Time (hr:min_sec) with AM (or PM) icon
- > Away Time icon (up arrow) meaning Away is selected as Main Time, blank if Home is Main
- > Day of Week graphic (MON, TUE, etc.)
- > Battery icon, if a Low Battery
- > TLBG, if any after NORM/FREE dives

- A (< 2 sec) - to access the Watch Menu displaying the first selection, Watch ALT.
- M (< 2 sec) - to access the Watch Menu displaying the last selection, Set T.
- M (2 sec) - to access the NORM Surface Main screen.
- S (< 2 sec) - to silence the Daily Alarm.
- L (press) - to activate the Backlight.



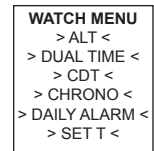
Fig. 4A - WATCH MAIN (Home as default)



Fig. 4B - WATCH MAIN (Away as default, Dual on)

WATCH MENU

- A (< 2 sec) - to step forward through selections 1 at a time.
- A (hold) - to scroll forward through selections (8 per second).
- S (< 2 sec) - to access the selection displayed.
- M (< 2 sec) - to step back through selections 1 at a time.
- M (2 sec, any time) - to revert to Main.
- No button action (2 min) - revert to Main.
- L (press) - to activate the Backlight.



WATCH ALT, information includes (Fig. 5):

- > Date, as Month.Day (or Day.Month)
- > Temperature with ° icon and graphic F (or C)
- > Altitude graphic EL2 (to EL 7), blank if Sea level

- A (< 2 sec) - to step forward to Dual Time Lead-in.
- M (< 2 sec) - to step back to Watch Main.



Fig. 5 - WATCH ALT (Date as Month.Day)

DUAL TIME

This selection allows Dual Time (that at a travel location) to be added to the Watch Main screen, or removed (see figure 4).

- > ON adds (shows) it, OFF removes it.

Dual Time Lead-in, information includes (Fig. 6):

- > DUAL icon
- > Graphics SHO, dUAL, and TIME

- S (< 2 sec) - to access Display Dual Time.
- A (< 2 sec) - to step forward to CDT Lead-in.
- M (< 2 sec) - to step back to Watch ALT.



Fig. 6 - DUAL TIME LEAD-IN

Display Dual Time, information includes (Fig. 7):

- > DUAL icon
- > Dual Time (hr:min), if set by hour differential (a Set T item), or 3 dashes (- : -) if none set
- > Graphic ADD -
- > Set Point graphics* ON (or OFF) flashing

- A (< 2 sec) - to toggle* between ON and OFF.
- S (< 2 sec) - to save the setting and revert to Lead-in.
- S (2 sec) - to step back to Lead-in, if no change.



Fig. 7 - DISPLAY DUAL TIME (to show on Main)

**OFF only with no toggle if no Differential has been set.*

CDT (Countdown Timer)

This selection provides access to a CDT for use in Watch mode. Upon accessing a dive computer mode, the Watch CDT operation will be terminated and the time reset to the previous setting.

- > Free Mode has a separate (min:sec) CDT.

CDT Lead-in, information includes (Fig. 8):

- > Graphics Cdt and WATCH

- S (< 2 sec) - to access CDT Status.
- A (< 2 sec) - to step forward to Chrono Lead-in.
- M (< 2 sec) - to step back to Dual Time Lead-in.

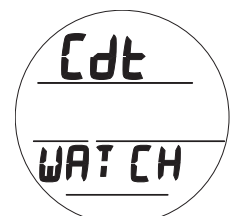


Fig. 8 - CDT LEAD-IN

CDT Status, information includes (Fig. 9):

- > Remaining CDT (hr:min) with ON, if in progress; or 0:00 with OFF if the CD is complete; or CDT previously set with OFF
- > Graphic CDT - OFF (or ON)

- A (< 2 sec) - to step forward through selections of OFF, ON, and SET.
- M (< 2 sec) - to step back through selections.
- S (< 2 sec) - to save the selection.



Fig. 9 - CDT STATUS

*>> If OFF or ON is selected, revert to the Lead-in screen.
>> If SET is selected, access the Set CDT screen.*

Set CDT, information includes (Fig. 10):

- > Graphics SET and CDT - OFF
- > CDT (hr:min) with Hour digits flashing

- A (hold) - to scroll upward through Hour Set Points at a rate of 8 per second from 0: to 23: in increments of 1: (hr).
- A (< 2 sec) - to step upward through Set Points one at a time.
- M (< 2 sec) - to step back through Set Points one at a time.
- S (< 2 sec) - to save the Hour Set Point and flash the Minute digits.
- A (hold) - to scroll upward through Minute Set Points at a rate of 8 per second from :00 to :59 in increments of :01 (min).
- A (< 2 sec) - to step upward through Set Points one at a time.



Fig. 10 - SET CDT

- M (< 2 sec) - to step back through Set Points one at a time.
- S (< 2 sec) - to save the CDT Set Point and revert to the CDT Status screen with the graphic SEt flashing (Fig. 11).
 - > Selecting ON will then start the countdown and revert to the Lead-in screen.
 - > Selecting OFF will save the setting and revert to the Lead-in screen.

The CDT will run in the background, while in Watch mode, until it counts down to 0:00, or it is set OFF, or DC Mode is accessed or a Dive is started in which case the countdown will terminate and revert to OFF.

When a set Countdown Time reaches 0:00, the Audible Alarm will sound during which time the graphic CDT will flash on the Watch Main Time screen (Fig. 12).

CHRONOGRAPH

The Chronograph is a stop watch timer for use in Watch mode.

While the Chronograph is running, it remains on the screen until another screen is accessed, it will then continue to run in the background while on the surface.

Upon activation of dive mode, Chrono operation will be terminated and the time will reset to 0:00:00_00.

Chrono Lead-in, information includes (Fig. 13):

- > Graphics Chro and WATCH
- S (< 2 sec) - to access Chrono Status.
- A (< 2 sec) - to step forward to Daily Alarm Lead-in.
- M (< 2 sec) - to step back to CDT Lead-in.

Chrono Status, information includes (Fig. 14):

- > Graphics LAP1 (or 2 to 9) and CHR
- > Elapsed run time counting up (if previously started), or 0:00:00_00 (hr:min:sec_1/100th sec), flashing
- If stopped, S (< 2 sec) - to start Timer counting up from 0:00:00_00 to 9:59:59_99 max in increments of .01 sec. After first 4.99 seconds, the .01 digits display 2 dashes.
- S (< 2 sec) - to save that Lap and display the next (up to 9, then restart with 1), with the time continuing to count up.
- A (< 2 sec) - to stop the Timer and recall Lap 1 displaying it's time, repeat to recall other Lap times.
- A (2 sec) - to reset time to 0:00:00_00.
- S (2 sec) - to exit and revert to the Chrono Lead-in screen.

DAILY ALARM

When set On, the Daily Alarm will -

- > be synchronized with the Watch Default Time selected
- > sound the Audible at the Time set every day
- > not sound the Audible while operating in DC Modes
- > run in the background until set Off

Daily Alarm Lead-in, information includes (Fig. 15):

- > Graphics AL and DAILY with alarm (speaker) icon
- S (< 2 sec) - to access Chrono Status.
- A (< 2 sec) - to step forward to Daily Alarm Lead-in.
- M (< 2 sec) - to step back to CDT Lead-in.

Daily Alarm Status, information includes (Fig. 16):

- > Alarm (speaker) icon
- > Alarm Time set (hr:min) with AM (or PM) icon if 12 Hour
- > Graphic AL -
- > Graphic ON (or OFF) flashing
- A (< 2 sec) - to step forward through the selections of OFF, ON, and SET (Fig. 17).
- M (< 2 sec) - to step back through the selections.
- S (< 2 sec) - to save the selection.
- If OFF or ON is selected, S (< 2 sec) - to revert Set Daily Alarm Lead-in.
- If SET is selected, S (< 2 sec) - to access the Set screen.

Set Daily Alarm, information includes (Fig. 18):

- > Graphics SEt and AL with alarm icon
- > Alarm Time (hr:min), Hour digits flashing, with AM (or PM) icon; no icon if 24 Hour Format
- A (hold) - to scroll upward through Hour Set Points at a rate of 8 per second from 0: to 23: in increments of 1: (hr).
- A (< 2 sec) - to step upward through Hour Set Points one at a time.
- M (< 2 sec) - to step back through Set Points one at a time
- S (< 2 sec) - to save the Hour and flash the Minute digits.
- A (hold) to scroll upward through Minute Set Points at a rate of 8 per second from :00 to :59 in increments of :01 (min).

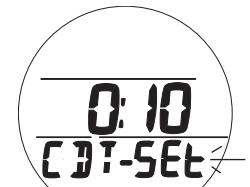


Fig. 11 - CDT STATUS (after being set)



Fig. 12 - WATCH MAIN (during CDT alarm)



Fig. 13 - CHRONO LEAD-IN



Fig. 14 - CHRONO STATUS (Lap 2 in progress)



Fig. 15 - DAILY ALARM LEAD-IN



Fig. 16 - DAILY ALARM STATUS (upon access)



Fig. 17 - DAILY ALARM STATUS (to access Set)



Fig. 18 - SET DAILY ALARM

- A (< 2 sec) to step upward through Minute Set Points one at a time.
- M (< 2 sec) to step back through Set Points one at a time.
- S (< 2 sec) - to save the Alarm Set Point and revert to the Daily Alarm Status screen with OFF flashing (Fig. 19).

To turn the alarm function On -

- A (< 2 sec) - to step through the selections (of OFF, ON, SET) to ON.
- M (< 2 sec) - to step back through the selections.
- S (< 2 sec) - to save the ON* selection and revert to the Set Daily Alarm Lead-in.

**Selecting and saving OFF will retain the time set and revert to the Lead-in. It can then be turned On when ready.*



Fig. 19 - DAILY ALARM STATUS (Set, ready)

SET T MENU (TIME)

Sequence >> Lead-in >> Date Format >> Hour Format >> Default Time >> Dual Time >> Time of Day >> Date

Set Points remain as set until changed.

Set T Lead-in, information includes (Fig. 20):

- > Graphics SET and T
- S (< 2 sec) - to access Set Date Format.
- A (< 2 sec) - to step forward to Watch Main Time.
- M (< 2 sec) - to step back to Daily Alarm Lead-in.

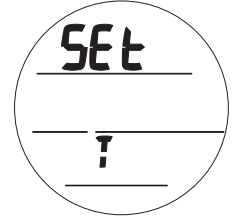


Fig. 20 - SET T LEAD-IN

Set Date Format, information includes (Fig. 21):

Date Format establishes the location that the Month (M) digits are displayed relative to the Day (D) digits, on the left or right.

- > Graphic SET
- > Set Point graphics M-D (or D-M) flashing
- A (< 2 sec) - to toggle Set Points.
- S (< 2 sec) - to save Set Point and access Set Hour Format.
- S (2 sec) - to step back to Set T Lead-in.

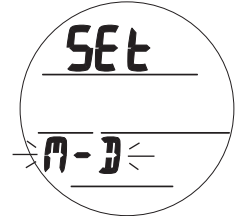


Fig. 21 - SET DATE FORMAT

Set Hour Format, information includes (Fig. 22):

Hou Format establishes number of hours displayed for Time of Day, 1 to 12 (AM and PM) or 1 to 24.

- > Graphics SET and HR
- > Set Point graphic 12 (or 24) flashing
- A (< 2 sec) - to toggle Set Points.
- S (< 2 sec) - to save Set Point and access Set Watch Default Time.
- S (2 sec) - to step back to Set Date Format.



Fig. 22 - SET HOUR FORMAT

Select Default Time, information includes (Fig. 23A/B):

This feature selects which Time, Home or Away**, is to be displayed as the Watch Main (Default) Time (in the center of the Watch Time screen)*.

**The other will be displayed (at the top of the Watch Time screen) when a Dual Time (differential) is set and Display Dual Time is set On.*

- > Graphics SEL and dFLT
- > Graphic HOME (or AWAY*) flashing

***The Up Arrow icon is used (only while in Watch mode) to indicate that Away Time is selected as the Watch Default Time (in the center).*

- A (< 2 sec) - to toggle between HOME and AWAY.
- S (< 2 sec) - to save Set Point and access Set Dual Time Differential.
- S (2 sec) - to revert to Set Hour Format.

*HOME is the time where you live, work, spend most of your time.
AWAY is the time set for a travel destination.*

*DEFAULT is the time you choose as the Watch's local main time (Home or Away).
DUAL is the time at the other remote location (Away or Home).*

Set Dual Time Differential, information includes (Fig. 24):

This feature allows you to set an Hour based numeric time Differential ranging from - 23 through 0 to + 23 (hours).

This feature provides a second (Dual) Time equal to the Watch's Default Time of Day +/- the Hours selected.

- > Graphics SET and HR
- > Graphic OFF or the Differential numeric digits with + (or -) icon flashing
- > Away Time (Up Arrow) icon if Away is the Watch Default Time, no icon if Home is the Default



Fig. 23A - SELECT HOME (as Watch Default Time)



Fig. 23B - SELECT AWAY (as Watch Default Time)



Fig. 24 - SET DUAL TIME (hour differential)

- A (hold) - to scroll upward through the Set Points at a rate of 8 per second from - 23 through 0 to + 23 in increments of 1 (hour).
- A (< 2 sec) - to step upward through Set Points one at a time.
- M (< 2 sec) - to step back through Set Points one at a time.
- S (< 2 sec) - to save the Differential Set Point and revert to the Set Time Menu.

Example (Fig. 25):

- > Watch Time displays 3:02 PM.
- > Dual Time Differential is set for + 2 Hours.
- > Dual Time would be displayed as 5:02.



Fig. 25 - WATCH TIME (Dual Time set and On)

Set Time of Day, information includes (Fig. 26A/B):

This setting directly changes the Time of Day that is selected to be the Watch Default Time, whether it is Home Time or Away (travel location) Time. The other will be changed by the Dual Time Differential set.

- > Graphic SET
- > Time of Day (hr:min), Hour digits flashing, with AM (or PM) icon if 12 hour Format, no icon if 24 Hour
- > Away (Up Arrow) icon, if Away is the Watch Default Time

- A (hold) - to scroll upward through Hour Set Points at a rate of 8 per second from 12: AM to 11: PM, or 0: to 23: if 24 Hour Format, in increments of 1: (hr).
- A (< 2 sec) - to step upward through Set Points one at a time.
- M (< 2 sec) - to step back through Set Points one at a time.
- S (< 2 sec) - to save the Hour Set Point and flash the Minute digits.
- S (2 sec) - to step back to Set Dual Time Differential.
- A (hold) - to scroll upward through Minute Set Points at a rate of 8 per second from :00 to :59 in increments of :01 (min).
- A (< 2 sec) - to step upward through Set Points one at a time.
- M (< 2 sec) - to step back through Set Points one at a time.
- S (< 2 sec) - to save the Time Set Point and access Set Date.
- S (2 sec) - to step back to Set Hour.



Fig. 26A - SET TIME (while at Home)

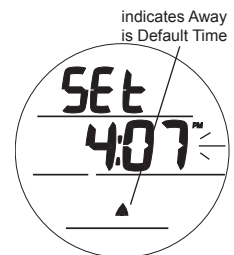


Fig. 26B - SET TIME (while Away)

Set Date, information includes (Fig. 27):

The sequence for setting date is Year, then Month, then Day, regardless of the Date Format set.

- > Month.Day (or Day.Month) digits
- > Year digits flashing
- > Graphics M - D (or D - M), identifying top row digits

- A (hold) to scroll upward through Year Set Points at a rate of 8 per second from 2009 to 2052, in increments of 1.
- A (< 2 sec) - to step upward through Set Points one at a time.
- M (< 2 sec) - to step back through Set Points one at a time.
- S (< 2 sec) - to save the Year Set Point and flash the Month digits.
- S (2 sec) - to step back to Set Time.
- A (hold) - to scroll upward through Month Set Points at a rate of 8 per second from 1 to 12 in increments of 1.
- A (< 2 sec) - to step upward through Set Points one at a time.
- M (< 2 sec) - to step back through Set Points one at a time.
- S (< 2 sec) - to save the Month Set Point and flash the Day digits.
- S (2 sec) - to step back to Set Year
- A (hold) - to scroll upward through Day Set Points at a rate of 8 per second from 1 to 31 (max) in increments of 1
- A (< 2 sec) - to step upward through Set Points one at a time
- M (< 2 sec) - to step back through Set Points one at a time
- S (< 2 sec) - to save the Date Set Point and revert to the Set T Lead-in.
- S (2 sec) - to step back to Set Month.



Fig. 27 - SET DATE

DIVE COMPUTER OPERATING MODES

NORM Mode >> for Air and Nitrox SCUBA activity with 1 or 2 Gases

GAUG Mode >> for SCUBA activity

FREE Mode >> for breath hold diving activity with Depth/Time indication

If no previous dive has been taken within the past 24 hours, NORM is the default upon access from Watch Mode. Others can be accessed using the Surface Menu.

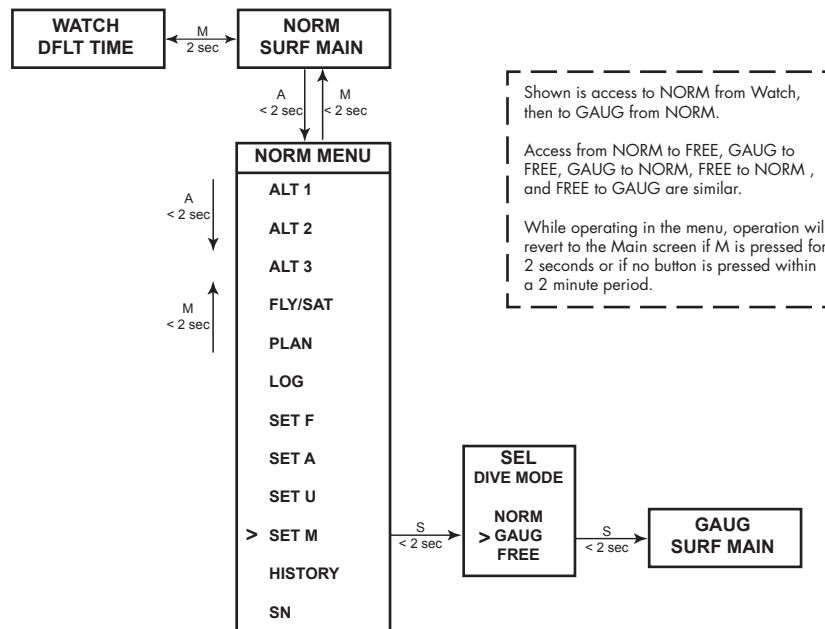
At any time while operating in Surface Modes, operation will enter the Dive Mode selected upon descent to 5 FT (1.5 M) for 5 seconds.

Operation will revert from Dive Mode to Surface Mode upon ascent to 2 FT (0.6 M) for 1 second.

During the first 10 minutes after a NORM/GAUG dive, or 1 minute after a FREE dive, the Dive Main screen will remain on displaying Max Depth and Elapsed Dive together with Surface Interval Time in place of Current Depth.

- During the first 10 minutes (or 1 minute), Dive ALT screens can be viewed.
- A descent during the first 10 minutes after surfacing from a NORM or GAUG dive, or the first 1 minute after surfacing from a FREE dive, is a continuation of that dive.
- After the 10 minute (or 1 minute) interval has elapsed, the normal Surface Main will be displayed with access given to the Surface Menu selections. A descent is then considered a new dive.

DIVE COMPUTER MODE ACCESS



NORM

SURFACE MODES

NORM SURF MAIN, information includes (Fig. 28):

- > Surface Interval time (hr:min) with SURF icon; if no dive yet, this is time since activation
- > Time of Day (hr:min) with AM or PM icon if 12 Hour Format; no icon if 24 Hour Format
- > Graphic NOR
- > Dive number with DIVE icon, up to 24 for that operating period (0 if no dive made yet)
- > NX icon, if FO2 is set for Nitrox
- > (PZ+) icon, if selected, no icon if DSAT is selected
- > CF icon, if Conservative Factor is set On
- > Gas 1 icon, default in Surface Mode
- > TLBG with icon, if any after a NORM or FREE dive
- > Battery icon, if voltage is low

- A (< 2 sec) - to access ALT 1.
- A (hold) - to scroll forward through Menu items.
- M (< 2 sec) - to access SN.
- L (press) - to activate Backlight.

Upon surfacing during dives, the Dive Main will remain on display for the first 10 minutes with Surface Interval time (SI) in place of Depth after which the post dive Surface Main will be displayed (Fig. 29).

NORM SURF ALT 1, information includes (Fig. 30):

- > SI* (hr:min) with SURF icon, prior to Last dive
- > Graphic LAST, indicating data is for dive previously conducted while still in NORM mode
- > Max Depth* of dive previously conducted while still in NORM mode with MAX and FT (or M) icons
- > EDT* (Elapsed Dive Time up to 999 min) with DIVE and min icons

* dashes if no previous dive conducted

- A (< 2 sec) - to access ALT 2.
- A (hold) - to scroll forward through Menu items.
- M (< 2 sec) - to step back to Main.
- L (press) - to activate Backlight.

NORM SURF ALT 2, information includes (Fig. 31):

- > Temperature with ° icon and graphic F (or C)
- > Altitude graphic, if EL2 (to EL7), blank if Sea level

- A (< 2 sec) - to access ALT 3 (if a Nitrox dive has been conducted, bypassed to Fly/Sat if not).
- A (hold) - to scroll forward through Menu items.
- M (< 2 sec) - to step back to ALT 1.
- L (press) - to activate Backlight.

NORM SURF ALT 3, information includes (Fig. 32):

- > Current O2 (%) with O2SAT icon
- > PO2 alarm value set (ATA) with PO2 and MAX icons
- > FO2 set for Gas 1 with FO2 icon
- > NX icon, if FO2 is set for Nitrox
- > (PZ+) icon, if selected, no icon if DSAT is selected
- > CF icon, if Conservative Factor is set On
- > Gas 1 icon, default on surface

- A (< 2 sec) - to access Fly/Sat.
- A (hold) - to scroll forward through Menu items.
- M (< 2 sec) - to step back to ALT 2.
- L (press) - to activate Backlight.

FLY/SAT TIME

Time to Fly is a countdown timer that begins counting down from 23:50 to 0:00 (hr:min) 10 minutes after surfacing from a dive (NORM, GAUG, or FREE).

Time to Dsaturate, also a countdown timer, provides calculated time for tissue desaturation at sea level taking into consideration the Conservation Factor setting. It also begins counting down 10 minutes after surfacing from a dive (NORM or FREE), counting down from 23 to 10 (hr only), then 9:59 to 0:00 (hr:min).

When the SAT countdown reaches 0:00, which will generally occur prior to the FLY countdown reaching 0:00, it will remain on the display until the FLY countdown reaches 0:00.

- > When other screens are accessed, the FLY and SAT countdowns continue in the background.
- > SAT is not displayed after a Gauge or Violation dive.
- > Desaturation requiring Times greater than 24 hours will display 24 until it decreases to 23 (hr) .
- > In the event that Time to Desaturate still remains at the end of 24 hours, any remaining time will be cleared.



Fig. 28 - NORM SURF MAIN (no dive yet)

Time of Day does not display Seconds in dive modes.

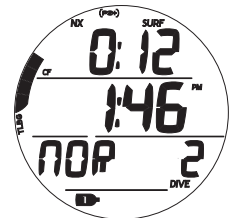


Fig. 29 - NORM SURF MAIN (> 10 min after dive 2)

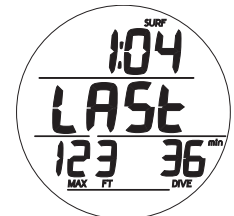


Fig. 30 - NORM SURF ALT 1 (Last dive's data)



Fig. 31 - NORM SURF ALT 2

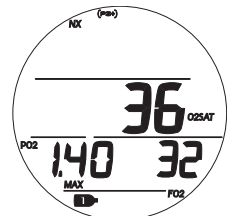


Fig. 32 - NORM SURF ALT 3 (only if Nitrox)

FLY/SAT, information includes (Fig. 33A, B):

- > Graphic FLY with Time to Fly (hr:min), - : - - if no dive yet
- > Graphic SAT with Time to Desat (hr:min), - : - - if no dive yet, 0:00 if no time remaining
- A (< 2 sec) - to access Plan.
- A (hold) - to scroll forward through Menu items.
- M (< 2 sec) - to step back to ALT 3 (if Nitrox), or ALT 2 (if not).
- L (press) - to activate Backlight.



Fig. 33A - FLY/SAT
(no dive yet)

PLAN MODE (NORM)

No Deco Dive Times (NDLs/OTLs) in Plan Mode are based on -

- > the algorithm selected (DSAT or PZ+)
- > the FO2 set (for Gas 1 only, the default for Plan)
- > the setting for the Conservative Factor (Off or On*)
- > any residual nitrogen or oxygen remaining from previous dives (NORM or FREE)



Fig. 33B - FLY/SAT
(10 min after dive)

**When the Conservative Factor is set On, Dive times are reduced to the values of the next higher 3000 foot (915 meter) Altitude. Refer to tables in back.*

Plan Lead-in, information includes (Fig. 34A, B):

- > Graphic PLAN
- > PO2 alarm value set (ATA) with PO2 icon, blank if Air
- > Gas 1 FO2 Set Point, graphic Air or numeric value (21 to 100), with FO2 and Gas 1 icons
- > NX icon, if FO2 is set for Nitrox
- > (PZ+) icon, if selected, no icon if DSAT is selected
- > CF icon, if Conservative Factor is set On
- > Gas 1 icon, default for Plan

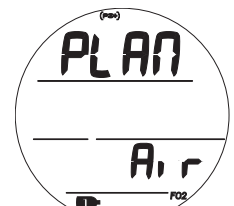


Fig. 34A - PLAN LEAD-IN
(Gas 1 set for Air)

- A (< 2 sec) - to access Log.
- A (hold) - to scroll forward through Menu items.
- M (< 2 sec) - to step back to FLY/SAT.
- S (< 2 sec) - to access PDPS.
- L (press) - to activate Backlight.

PDPS (Pre Dive Planning Sequence)

The PDPS displays Depths and allowable No Deco Dive Times (up to 999 minutes), NDLs (nitrogen based limits) if nitrogen is in control or OTLs (oxygen based limits) if O2 is in control.



Fig. 34B - PLAN LEAD-IN
(Gas 1 set for Nitrox)

It will sequence through PDPS screens displaying Depths from 30 to 190 FT (9 to 57 M) with Plan times* based upon the previous dive profiles in a series of repetitive dives and taking into account descent and ascent rates of 60 FPM (18 MPM).

**If less than 1 minute time is available, dashes will be displayed for time, and Depth values will flash.*

PDPS, information includes (Fig. 35A, B):

- > Plan Depth value with FT (or M) icon
- > Dive Time allowed with NDC (or O2) and min icons
- > Max Depth allowed for the PO2 alarm value set with MAX and FT (or M) icons, blank if FO2 is set for Air
- > Gas 1 FO2 Set Point, graphic Air or numeric value (21 to 100), with FO2 icon
- > NX, (PZ+), CF icons - those that apply
- > Gas 1 icon, default for Plan

- A (< 2 sec) - to step forward through PDPS screens.
- A (hold) - to scroll forward through PDPS screens at a rate of 8 per second from 30 to 190 FT (9 to 57 M) in increments of 10 FT (3 M).
- M (< 2 sec) - to step back through PDPS screens.
- S (< 2 sec) - to revert to the Lead-in after the last screen.
- S (2 sec) - to revert to the Lead-in screen.
- L (press) - to activate Backlight.

LOG MODE (NORM/GAUG)

Information from the latest 24 NORM and/or GAUG dives** is stored for viewing.

- > After exceeding 24 dives, the most recent dive is stored while the oldest is deleted.
- > Dives are numbered from 1 to 24 starting each time NORM (or GAUG) Dive Mode is activated. After the post dive 24 hour period has elapsed and the unit shuts off, the first dive of the next activation period will be #1.
- > In the event that a dive's elapsed time (EDT) exceeds 599 (min), the data at the 599 interval is recorded in the Log upon surfacing of the unit.

***FREE Dive information is only available using the OceanLog PC Interface download.*

Log sequence >> Lead-in >> Preview >> Data 1 >> Data 2 >> Data 3

Log Lead-in, information includes (Fig. 36):

- > Log (book) icon
- > Graphics NOR - GAU

- A (< 2 sec) - to access Set F Lead-in.
- M (< 2 sec) - to step back to Plan Lead-in.
- S (< 2 sec) - to access Log Preview.
- L (press) - to activate Backlight.

Log Preview, information includes (Fig. 37):

- > Log Mode (book) icon
- > Date (month.day or day.month), the dive was conducted; or blank if none recorded
- > Time dive began (hr:min) with AM (or PM) icon if 12 Hour Format, no icon if 24 Hour Format; or graphic NONE
- > Graphic NOR (or GAU or VIO or YET -)
- > Dive number (1 to 24, 0 if no dive yet) with DIVE icon
- > NX, (PZ+), CF, DS icons - those that apply

- A (< 2 sec) - to step through Preview screens from the most recent to the oldest recorded.
- A (hold) - to scroll through Preview screens from the most recent to the oldest recorded at a rate of 8 per second.
- M (< 2 sec) - to step through Preview screens in the opposite direction.
- S (< 2 sec) - to access Data 1 for the dive Preview displayed.
- S (2 sec) - to revert to the Lead-in screen.
- L (press) - to activate Backlight.

Log Data 1, information includes (Fig. 38A, B):

- > Log Mode (book) icon
- > Pre dive SI (hr:min), - : - - if no previous dive that activation period, with SURF icon
- > Total Ascent Time (min) with TAT and min icons, if Deco
- > Max Depth with MAX and FT (or M) icons
- > EDT with DIVE and min icons
- > TLBG with the max accumulation segment flashing, others fixed up to end of dive accumulation. All segments flashing if a Delayed Violation. No TLBG if Gauge Mode.
- > VARI, max Ascent Rate sustained for 4 sec
- > NX, (PZ+), CF, DS icons - those that apply

- S (< 2 sec) - to access Data 2 for that dive.
- S (2 sec) - to revert to Preview screen.
- L (press) - to activate Backlight.

Log Data 2, information includes (Fig. 39):

- > Log Mode (book) icon
- > Temperature (minimum that dive) with ° icon and graphic F (or C)
- > Graphic SEA (or EL2 to EL7), indicating the Altitude at which the dive was conducted

- S (< 2 sec) - to access Data 3 for that dive; or revert to Preview if a GAUG dive.
- S (2 sec) - to revert to the Data 1 screen.
- L (press) - to activate Backlight.

Log Data 3, information includes (Fig. 40):

- > Log Mode (book) icon
- > O2% at end of dive, 2 dashes if Violation Gauge Mode, with O2SAT icons
- > Highest PO2 (ATA) reached during the dive with PO2 and MAX icons
- > FO2 Set Point (or graphic Air) for Gas in use when dive ended, with FO2 icon
- > Gas 1 (or 2) icon, one in use when dive ended
- > NX, (PZ+) icons - if they apply

- S (< 2 sec) - to revert to the Preview screen.
- S (2 sec) - to revert to the Data 2 screen.
- L (press) - to activate Backlight.

SET F MENU (NORM FO2)

Sequence >> FO2 Gas 1 >> FO2 Gas 2 >> 50% Default

When the FO2 50% Default is set Off, FO2 will remain set at the last FO2 Gas 1 Set Point saved during that period of activation.

When the FO2 50% Default is set On and FO2 for Gas 1 is set for a numerical value, 10 minutes on the surface after that dive the FO2 Gas 1 will be displayed as 50 and further dives will be calculated based on 50% O2 for oxygen calculations and 21% O2 for Nitrogen calculations (79% Nitrogen), unless FO2 Gas 1 is set before the dive.

FO2 Gas 1 will continue to reset to the FO2 50% Default after subsequent repetitive dives until 24 hours elapse after the last dive, or the FO2 50% Default is set Off.

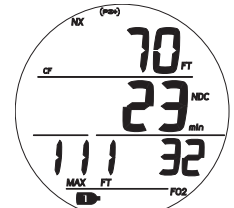


Fig. 35A - PDPS (nitrogen control)

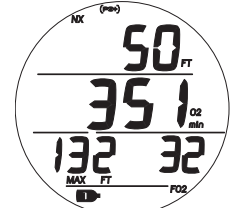


Fig. 35B - PDPS (oxygen control)



Fig. 36 - LOG LEAD-IN

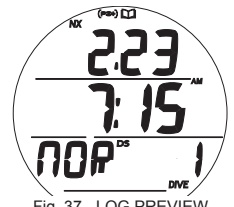


Fig. 37 - LOG PREVIEW (after NORM dive 1)

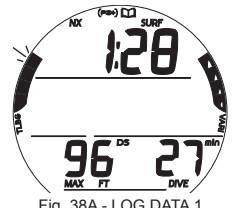


Fig. 38A - LOG DATA 1

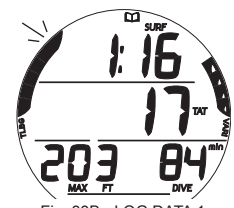


Fig. 38B - LOG DATA 1 (Deco during dive)

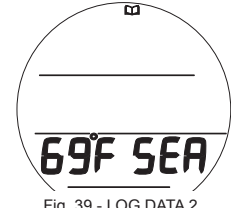


Fig. 39 - LOG DATA 2

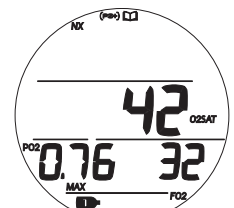


Fig. 40 - LOG DATA 3

FO2 set to Air

The default FO2 setting for Gas 1 each new activation period will be Air.

When FO2 Gas 1 is set for Air -

- > calculations are the same as when FO2 is set for 21%.
- > it will remain set for Air until set for a numerical FO2 value (21 to 100%).
- > O2 data (such as PO2, O2%) will not be displayed at any time during the dive, on the surface, or during the PDPS.
- > MODs (Max Operating Depths) will not be displayed on the FO2 set screen.
- > internally, it will keep track of O2 data in case FO2 for Gas 1 is subsequently set for Nitrox for repetitive dives.

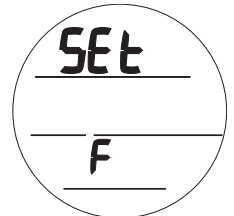


Fig. 41 - SET F LEAD-IN

FO2 set for Nitrox

When FO2 for either Gas is set for a numerical value (21 to 100%), the dive is considered Nitrox and the NX icon will be displayed.

- > The Air option will not be displayed as a Set FO2 for Gas 1 set selection until 24 hours elapse after the last dive.
- > There are no restrictions for setting FO2 values for Gas 1 and 2.

Set F Lead-in, information includes (Fig. 41):

- > Graphics SEt and F
- A (< 2 sec) - to step forward to Set A Lead-in.
- M (< 2 sec) - to step back to Log Lead-in.
- S (< 2 sec) - to access Set FO2 Gas 1.

Set FO2 Gas 1, information includes (Fig. 42):

- > Graphic SEt if Air; or Max Depth allowed for the PO2 alarm set with FT (or M) and NX icons if Nitrox
- > Gas 1 (tank) icon
- > PO2 alarm value set (ATA) with PO2 and MAX icons, blank if Air
- > Graphic Air, or numeric FO2 Set Point value if Nitrox, flashing, with FO2 icon

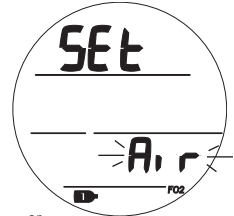


Fig. 42 - SET FO2 GAS 1

- A (hold) - to scroll upward through Set Points at a rate of 8 per second from Air (default) to 21 through 100 (%) in increments of 1%.
 - > The scroll will stop when A is released, or at 32, 50, and 80% (even if A is held depressed). Pressing and holding A again will resume the scroll through 100, then stop at Air or 21%.
- A (< 2 sec) - to step upward through Set Points one at a time.
- M (< 2 sec) - to step back through Set Points one at a time.
- S (< 2 sec) - to save the setting and access Set FO2 Gas 2.
- S (2 sec) - to revert to Set FO2 Lead-in.

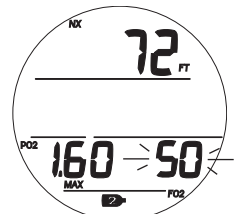


Fig. 43 - SET FO2 GAS 2

Set FO2 Gas 2, information includes (Fig. 43):

- > Graphic SEt if Air; or Max Depth allowed for the PO2 alarm set with FT (or M) and NX icons if Nitrox
- > Gas 2 (tank) icon
- > PO2 alarm value set (ATA) with PO2 and MAX icons, blank if Air
- > Graphic Air, or numeric FO2 Set Point value if Nitrox, flashing, with FO2 icon

- A (hold) - to scroll upward through Set Points at a rate of 8 per second from Air (default) to 21 through 100 (%) in increments of 1%.
 - > The scroll will stop when A is released, or at 32, 50, and 80% (even if A is held depressed). Pressing and holding A again will resume the scroll through 100, then stop at Air or 21%.
- A (< 2 sec) - to step upward through Set Points one at a time.
- M (< 2 sec) - to step back through Set Points one at a time.
- S (< 2 sec) - to save the setting and access Set FO2 Default if FO2 1 or 2 is Nitrox or Set F Lead-in if both are Air.
- S (2 sec) - to revert to Set FO2 Gas 1.



Fig. 44 - SET FO2 DEFAULT

Set FO2 Default, information includes (Fig. 44):

- > Graphics Set, dFLt, and 50 -
- > Graphics OFF (or OFF) flashing
- > NX and FO2 icons
- A (< 2 sec) - to toggle OFF and ON.
- S (< 2 sec) - to save the setting and revert to Set F Lead-in.
- S (2 sec) - to revert to Set FO2 Gas 2.

SET A MENU (NORM/GAUG ALARMS)

Sequence >> Lead-in >> Aud >> Depth >> EDT >> TLBG* >> DTR* >> PO2*

*Items apply to NORM only.

Set Points remain as set until changed.

Set A Lead-in, information includes (Fig. 45):

- > Graphics SEt and A
- A (< 2 sec) - to step forward to Set U Lead-in.
- M (< 2 sec) - to step back to Set F Lead-in.
- S (< 2 sec) - to access Set Audible Alarm.

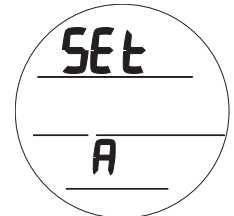


Fig. 45 - SET A LEAD-IN

Set Audible Alarm, information includes (Fig. 46):

- > Graphics SEt and AUD -
- > Set Point graphic ON (or OFF) flashing
- A (< 2 sec) - to toggle between ON and OFF.
- S (< 2 sec) - to save the setting and access Set Depth Alarm.
- S (2 sec) - to revert to Set A Lead-in.

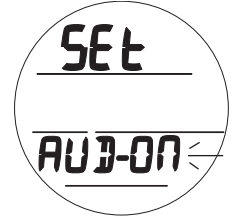


Fig. 46 - SET AUD AL

Set Depth Alarm, information includes (Fig. 47):

- > Graphic SEt
- > Graphic OFF or Depth value flashing with MAX and FT (or M) icons
- A (hold) to scroll upward through Set Points at a rate of 8 per second from 30 to 330 FT (10 to 100 M) in increments of 10 FT (1 M).
- A (< 2 sec) - to step upward through Set Points one at a time.
- M (< 2 sec) - to step back through Set Points one at a time.
- S (< 2 sec) - to save the setting and access Set EDT Alarm.
- S (2 sec) - to revert to Set Audible Alarm.

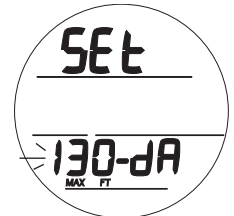


Fig. 47 - SET DEPTH AL

Set EDT Alarm, information includes (Fig. 48):

- > Graphics SEt and EDT -
- > Time value flashing with DIVE and min icons
- A (hold) - to scroll upward through Set Points at a rate of 8 per second from OFF to 10 through 180 (min) in increments of 5 min.
- A (< 2 sec) - to step upward through Set Points one at a time.
- M (< 2 sec) - to step back through Set Points one at a time.
- S (< 2 sec) - to save the setting and access Set TLBG Alarm.
- S (2 sec) - to revert to Set Depth Alarm.

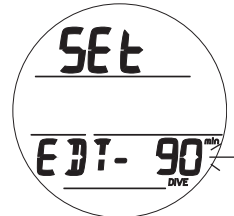


Fig. 48 - SET EDT AL

Set TLBG Alarm, information includes (Fig. 49):

- > Graphics SEt and TBG (Tissue Bar Graph)
- > Graphic OFF or TLBG segments with icon flashing
- A (< 2 sec) - to step upward through Set Points from OFF to 1 through 4 segments one at a time.
- M (< 2 sec) - to step back through Set Points one at a time.
- S (< 2 sec) - to save the setting and access Set DTR Alarm.
- S (2 sec) - to revert to Set EDT Alarm.

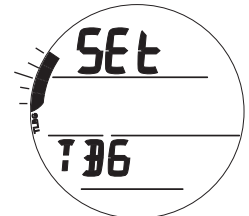


Fig. 49 - SET TLBG AL

Set DTR Alarm, information includes (Fig. 50):

- > Graphics SEt and DTR -
- > Time Value (min) flashing with min icon
- A (hold) - to scroll upward through Set Points at a rate of 8 per second from OFF to 5 through 20 (min) in increments of 1 min.
- A (< 2 sec) - to step upward through Set Points one at a time.
- M (< 2 sec) - to step back through Set Points one at a time.
- S (< 2 sec) - to save the setting and access Set PO2 Alarm.
- S (2 sec) - to revert to Set TLBG Alarm.

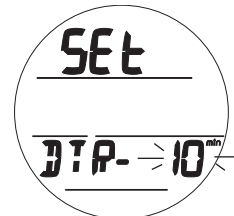


Fig. 50 - SET DTR AL

Set PO2 Alarm, information includes (Fig. 51):

- > Graphic SEt with PO2, MAX, and Nx icons
- > PO2 value ATA (atmospheres absolute) flashing
- A (< 2 sec) - to step upward through Set Points from 1.20 to 1.60 one at a time.
- M (< 2 sec) - to step back through Set Points one at a time.
- S (< 2 sec) - to save the setting and revert to Set A Lead-in.
- S (2 sec) - to revert to Set DTR Alarm.



Fig. 51 - SET PO2 AL

SET U MENU (UTILITIES)

Sequence >> Lead-in >> Wet >> Units >> DS* >> SS* >> Algo* >> CF* >> Glo >> SR

Set Points remain as set until changed.

*Items apply to NORM only.

Set U Lead-in, information includes (Fig. 52):

- > Graphics SEt and U
- A (< 2 sec) - to step forward to Set T Lead-in.
- M (< 2 sec) - to step back to Set A Lead-in.
- S (< 2 sec) - to access Set Wet.



Fig. 52 - SET U LEAD-IN

Set Wet Activation, information includes (Fig. 53):

- > Graphics SEt and WET -
- > Set Point ON (or OFF) flashing
- A (< 2 sec) - to toggle between ON and OFF.
- S (< 2 sec) - to save the setting and access Set Units.
- S (2 sec) - to revert to Set U Lead-in.



Fig. 53 - SET WET ACTIV

Set Units, information includes (Fig. 54):

- > Graphic Set
- > Set Point IMP (or MET) flashing with FT (or M) icon
- A (< 2 sec) - to toggle between IMP and MET.
- S (< 2 sec) - to save the setting and access Set DS.
- S (2 sec) - to revert to Set Wet.

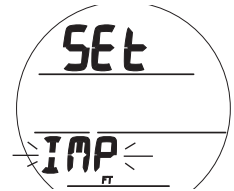


Fig. 54 - SET UNITS

Set Deep Stop (DS), information includes (Fig. 55):

- > Graphics SEt and DS with DS and Stop arrow/bar icons
- > Set Point ON (or OFF) flashing
- A (< 2 sec) - to toggle between ON and OFF.
- S (< 2 sec) - to save the setting and access Set SS.
- S (2 sec) - to revert to Set Units.



Fig. 55 - SET DS

Set Safety Stop (SS), information includes:

- > Graphic SEt with Stop arrow/bar icons
- > Graphic SS with Set Point ON (or OFF) flashing, or graphic TMR with ON flashing
- A (< 2 sec) - to step forward through the Set Points (SS OFF, SS ON, TMR ON).
- S (< 2 sec) - to save the setting.
- S (2 sec) - to revert to Set DS.



Fig. 56A - SET SS OFF

>> If SS OFF (Fig. 56A) or TMR ON (Fig. 56B) is selected, operation shall access Set Algorithm.
 >> If SS ON is selected (Fig. 56C), Stop Depth and Time is displayed with the min and sec icons, Time flashing.

- A (< 2 sec) - to toggle Stop Time Set Points between 3:00 and 5:00 (min:sec).
- S (< 2 sec) - to save the Stop Time setting and flash the Stop Depth digits.
- A (< 2 sec) - to step up through Depth Set Points of 10, 15, and 20 FT (or 3, 4, 5, and 6 M) one at a time
- S (< 2 sec) - to save the Stop Depth setting and access Set Algorithm.



Fig. 56B - SET SS TIMER

Set Algorithm, information includes (Fig. 57):

- > Graphics SEt and ALGO
- > Set Point graphic PZ+ (or DSAT) flashing
- A (< 2 sec) - to toggle between DSAT and PZ+.
- S (< 2 sec) - to save the setting and access Set CF.
- S (2 sec) - to revert to Set SS.

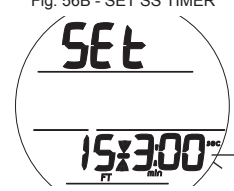


Fig. 56C - SET SS TIME/DEPTH

This feature allows selection of the algorithm to be used for nitrogen and oxygen calculations for Plan and DTR values. The setting locks in for 24 hours after NORM dives.

Set Conservative Factor (CF), information includes (Fig. 58):

- > Graphics SEt and CF with CF icon
- > Set Point graphics ON (or OFF) flashing
- A (< 2 sec) - to toggle between ON and OFF.
- S (< 2 sec) - to save the setting and access Set Glo.
- S (2 sec) - to revert to Set Algorithm.



Fig. 57 - SET ALGORITHM

When CF is set On, NDLs are reduced to values equivalent to those that would be available at the next higher 3000 foot (915 meter) Altitude. Refer to tables in back of manual.

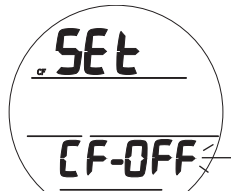


Fig. 58 - SET CF

Set Backlight Duration (Glo), information includes (Fig. 59):

- > Graphics SEt and GLO -
- > Time Set Point flashing with sec icon
- A (< 2 sec) - to step upward through Set Points of 0, 5, and 10 (sec) one at a time.
- M (< 2 sec) - to step back through Set Points one at a time.
- S (< 2 sec) - to save the setting and access Set SR.
- S (2 sec) - to revert to Set CF.

Backlight (Glo) Duration is the time the backlight will remain On after L is released (0 = no additional time).

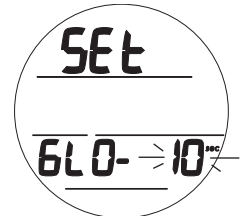


Fig. 59 - SET GLO

Set Sampling Rate (SR), information includes (Fig. 60):

- > Graphics SEt and SR -
- > Time Set Point flashing with sec icon
- A (< 2 sec) - to step upward through Set Points of 2, 15, 30, and 60 (sec) one at a time.
- M (< 2 sec) - to step back through Set Points one at a time.
- S (< 2 sec) - to save the setting and revert to Set U Lead-in.
- S (2 sec) - to revert to Set Glo.

Sampling Rate is the frequency at which data is sampled and stored for download to the OceanLog PC Interface program.



Fig. 60 - SET SAMPLING

SET M (DIVE OP MODE)

Sequence >> Lead-in >> NOR (or GAU or FRE)

Set Point remains as set until changed.

Set M Lead-in, information includes (Fig. 61):

- > Graphics SEt and M
- A (< 2 sec) - to step forward to History.
- M (< 2 sec) - to step back to Set U Lead-in.
- S (< 2 sec) - to access Set Dive Op Mode.

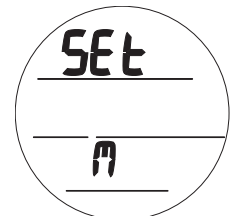


Fig. 61 - SET M LEAD-IN

Set Dive Operating Mode, information includes (Fig. 62):

- > Graphics SEt and OP with DIVE icon
- > Set Point flashing
- A (< 2 sec) - to step forward through Set Points of NOR, GAU, and FRE.
- M (< 2 sec) - to step back through Set Points.
- S (< 2 sec) - to save the setting and access that mode's Surface Main screen.
- S (2 sec) - to revert to Set M Lead-in.



Fig. 62 - SET DIVE OP MODE

HISTORY MODE (NORM/GAUG)

History is a summary of basic data recorded during all NORM and GAUG dives conducted.

History 1, information includes (Fig. 63):

- > Graphic Hour with Total hours of EDT (dive time) ever recorded (up to 1999), 0 until > 1 hour
- > Graphic HIS with Total number dives ever recorded (up to 999) with MAX and DIVE icons, 0 if no dive yet

- A (< 2 sec) to step forward to Serial Number.
- M (< 2 sec) to step back to Set M Lead-in.
- S (< 2 sec) to access History 2.



Fig. 63 - HISTORY 1

History 2, information includes (Fig. 64):

- > Graphic SEA, or EL2 to EL7, highest Altitude at which a dive was conducted
- > Temperature with graphic F (or C), lowest recorded
- > Max Depth ever reached (to 330 FT/100 M) with MAX and FT (or M) icons
- > Longest EDT (dive time) recorded during a single dive (up to 599 min) with DIVE and min icons

- S (< 2 sec) to revert to History 1.

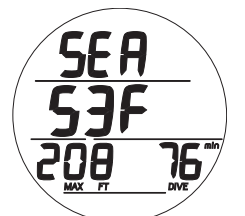


Fig. 64 - HISTORY 2

SERIAL NUMBER

Information displayed on this screen should be recorded and kept with your sales receipt, it will be required in the event that your GEO 2 requires factory service.

Serial Number, information includes (Fig. 65):

- > Graphic r1A (or higher), indicating the revision level of the firmware (GEO 2's operating software)
- > Graphic SN with the factory programmed serial number

- A (< 2 sec) - to step forward to Surface Main.
- M (< 2 sec) - to step back to History 1.
- L (press) - to activate Backlight.



Fig. 65 - SERIAL NUMBER

DIVE MODE FEATURES

BAR GRAPHS

The GEO 2 features 2 specific bar graphs.

- > The one on the left represents nitrogen loading. It is referred to as the TLBG (Tissue Loading Bar Graph).
- > The one on the right represents ascent rate. It is referred to as the VARI (Variable Ascent Rate Indicator).

TLBG (NORM/FREE)

The TLBG represents your relative No Deco (Fig. 66a) or Deco status (Fig. 67a). The first 4 segments represent No Deco status and the fifth indicates a Deco condition.

As your Depth and Elapsed Dive Time increase segments add.

As you ascend segments recede, indicating that additional no deco time is available.

The GEO 2 monitors 12 different nitrogen compartments simultaneously and the TLBG displays the one that is in control of your dive at any given time.

VARI (NORM/GAUG)

The VARI (Fig. 68a) provides a visual representation of ascent speed (i.e., an ascent speedometer).

The segments represent two sets of speeds which change at a reference depth of 60 FT (18 M). Refer to the chart.

When ascent is too fast, the audible will sound, and all VARI segments and the graphic SLO will flash (Fig. 69) until ascent is slowed.

⚠ WARNING: When deeper than 60 FT (18 M), ascent rates should not exceed 60 FPM (18 MPM). At depths of 60 FT (18 M) and shallower, ascent rates should not exceed 30 FPM (9 MPM).

Deeper than 60 FT (18 M)			60 FT (18 M) & Shallower		
VARI Segments	Ascent Rate		VARI Segments	Ascent Rate	
	FPM	MPM		FPM	MPM
0	0 - 20	0 - 6	0	0 - 10	0 - 3
1	21 - 30	6.1 - 9	1	11 - 15	3.1 - 4.5
2	31 - 40	9.1 - 12	2	16 - 20	4.6 - 6
3	41 - 50	12.1 - 15	3	21 - 25	6.1 - 7.5
4	51 - 60	15.1 - 18	4	26 - 30	7.6 - 9
5	60 +	18 +	5	30 +	9 +

ALGORITHM

The GEO 2 is configured with 2 algorithms which allows you to choose which set of NDLs (No Deco Limits) will be used for nitrogen/oxygen calculations and displays relating to Plan and DTR (Dive Time Remaining).

You can select to use either the DSAT or the PZ+. The selection will lock in for 24 hours after the last dive.

DSAT has been the standard used by Oceanic in all of its dive computers until this time. It features NDLs that are based on exposures and test data which also formed validation for the PADI RDP. It imposes restrictions for repetitive Deco dives, considered more risky.

PZ+ (Pelagic Z+) performance is based on Buhlmann ZHL-16c. It features NDLs that are considerably more conservative especially at shallower depths.

To create even greater margins of safety with respect to decompression, a Conservative Factor as well as No Deco Deep and Safety Stops can be included for No Deco dives.

CONSERVATIVE FACTOR (CF)

When the CF is set On, the NDLs which are based on the algorithm selected and used for Ni/O2 calculations and displays relating to Plan and DTR, will be reduced to the values available at the altitude level that is 3,000 feet (915 meters) higher. Refer to the charts in the back of this manual for times.

DEEP STOP (DS), No Deco only

When the DS selection is set On, it will trigger during NORM No Deco dives when you descend to 80 FT (24 M), then calculate (and continually update) a Stop Depth equal to 1/2 the Max Depth.

While 10 FT (3 M) deeper than the calculated DS, you will be able to access a DS Preview screen that will display the current DS Stop Depth/Time.

Upon initial ascent to within 10 FT (3 M) below the calculated Stop Depth, a DS screen displaying a Stop Depth at 1/2 the Max Depth will appear with a Countdown Timer beginning at 2:00 (min:sec) and counting down to 0:00.

- > If you descend 10 FT (3 M) below, or ascend 10 FT (3 M) above, the calculated Stop Depth for 10 seconds during the countdown, the No Deco Main will replace the DS Main display and the DS feature will be disabled for the remainder of that dive. There is no Penalty if the DS is ignored.
- > In the event that you enter Deco, exceed 190 FT (57 M), or a High O2 condition (=> 80%) occurs, the DS will be disabled for the remainder of that dive.
- > The DS is disabled during a High PO2 Alarm condition (=> Set Point).

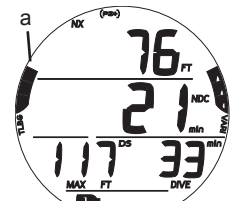


Fig. 66 - NO DECO

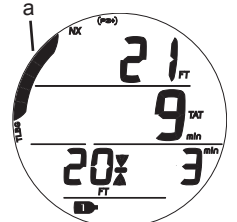


Fig. 67 - DECO

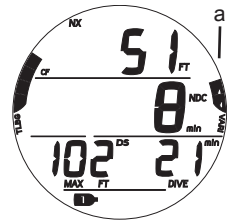


Fig. 68 - DIVE MAIN (Ascent normal)

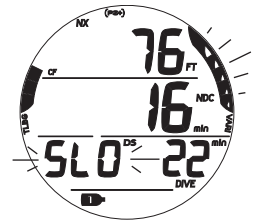


Fig. 69 - DIVE MAIN (Ascent Too Fast)

SAFETY STOP (SS), No Deco only

If set On:

Upon ascent to within 5 FT (1.5 M) deeper than the SS Depth set for 1 second on a No Deco dive in which Depth exceeded 30 FT (9 M) for 1 second, a beep will sound and a SS at the Depth set will appear on the Main display with a countdown beginning at the SS Time set and counting down to 0:00 (min:sec).

- If the SS was set for OFF or Timer, the display will not appear.
- In the event that you descend 10 FT (3 M) deeper than the Stop Depth for 10 seconds during the countdown, or the countdown reaches 0:00, the No Deco Main screen will replace the SS Main screen which will reappear upon ascent to within 5 FT (1.5 M) deeper than the Safety Stop Depth set for 1 second.
- In the event that you enter Deco during the dive, complete the Deco obligation, then descend below 30 FT (9 M); the SS Main will appear again upon ascent to within 5 FT (1.5 M) deeper than the SS Depth set for 1 second.
- If you ascend 2 FT (0.6 M) shallower than the SS Depth for 10 seconds prior to completing it, the SS will be canceled for the remainder of that dive.
- There is no Penalty if you surface prior to completing the SS or ignore it.

If set for Timer On:

Upon ascending to 20 FT (6 M) for 1 second on a No Deco dive in which Depth exceeded 30 FT (9 M) for 1 second, 1 beep will sound and a Run Timer will appear (if set On) displaying 0:00 (min:sec) until started.

- If the SS was set for Off or On, the Timer display will not appear.
- If you descend deeper than 30 FT (9 M) for 10 seconds, the No Deco Main will replace the Timer screen which will reappear upon ascent to 20 FT (6 M) for 1 second.
- If you ascend above 10 FT (3 M) for 10 seconds, or enter Deco, or a High O2 alarm condition occurs (100%), while the SS Timer is active, the SS Timer will be disabled for the remainder of that dive.

DTR (Dive Time Remaining)

The GEO 2 constantly monitors No Deco status and O2 Accumulation, and will display whichever Time is the least amount available as DTR on the No Deco Dive Main screen. The Time being displayed will be identified by the NDC or O2 icon.

NDC (No Deco DTR)

NDC is the maximum amount of time that you can stay at your present Depth before entering Deco. It is calculated based on the amount of nitrogen absorbed by hypothetical tissue compartments.

The rates each of these compartments absorb and release nitrogen is mathematically modeled and compared against a maximum allowable nitrogen level.

Whichever one is closest to this maximum level is the controlling compartment for that Depth. Its resulting value (NDC) will be displayed as DTR (Fig. 70a). It will also be displayed graphically as the TLBG (Fig. 70b).

As you ascend, the TLBG segments will recede as control shifts to slower compartments. This is a feature of the decompression model that is the basis for multilevel diving, one of the most important advantages that Oceanic dive computers offer.

OTR (O2 DTR)

When set for Nitrox operation, O2 during a dive is displayed on an ALT screen as a % of allowed saturation (Fig. 71a) identified by the O2SAT icons.

The limit for O2 exposure (100%) is set at 300 OTU (oxygen tolerance units) per dive or 24 hour period. As time before reaching the limit decreases, % O2 increases and OTR (O2 DTR) decreases.

When OTR becomes less than the NDC, calculations for the dive will be controlled by O2 and OTR will be displayed as DTR on the Main (Fig. 72a), identified by the O2 and min icons.

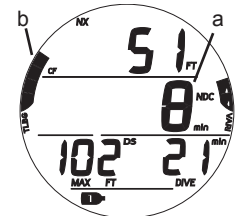


Fig. 70 - NO DECO MAIN

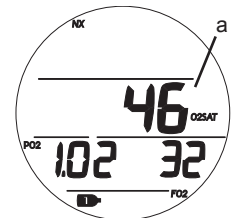


Fig. 71 - NO DECO ALT 1

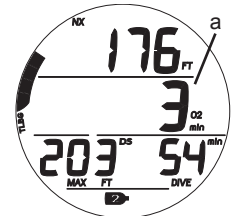


Fig. 72 - NO DECO MAIN

PO2 (ATA)	Max Duration Single Exposure		Max Total Duration 24 Hour Day	
	(min)	(hr)	(min)	(hr)
0.60	720	12.0	720	12.0
0.70	570	9.5	570	9.5
0.80	450	7.5	450	7.5
0.90	360	6.0	360	6.0
1.00	300	5.0	300	5.0
1.10	240	4.0	270	4.5
1.20	210	3.5	240	4.0
1.30	180	3.0	210	3.5
1.40	150	2.5	180	3.0
1.50	120	2.0	180	3.0
1.60	45	.75	150	2.0

NORM

DIVE MODE

NO DECO DIVE MAIN, information includes (Fig. 73) -

- > Current Depth with FT (or M) icon
- > DTR (min) with NDC (or O2) and min icons
- > Max Depth with MAX and FT (or M) icons
- > EDT (Elapsed Dive Time) with DIVE and min icons
- > TLBG with icon
- > VARI while ascending
- > NX, (PZ+), CF, Gas, DS icons - those that apply

- A (< 2 sec) - to access ALTs.
- A (2 sec) - to access Deep Stop Preview, if triggered.
- M (2 sec) - to access Gas Switching.
- S (< 2 sec) - to acknowledge alarms.
- L (press) - to activate Backlight.

Upon ascending to 2 FT (0.6 M) during a dive, Surface Interval time will be displayed with the SURF icon flashing for the first 10 minutes and NDC will be displayed as 2 dashes (Fig. 74).

- A (< 2 sec) - to access Dive ALTs.
- M (2 sec) - to access Gas Switching.
- L (press) - to activate Backlight.

- >> After 10 minutes elapse, operation will revert to Surface Mode and full access given to the NORM Surface Menu items.
- >> If a descent is made to 5 FT (1.5 M) for 5 seconds, the dive will be continued. Surface time will not be added to Dive Time.

No Deco Alt 1, information includes (Fig. 75) -

- > Time of Day (hr:min), with AM (or PM) icon if 12 Hour Format, no icon if 24 Hour Format
- > Temperature with ° icon and graphic F (or C)

- A (< 2 sec) - to access ALT 2 (if Nitrox).
- Revert to Main in 5 sec, if A not pressed.
- L (press) - to activate Backlight.

No Deco Alt 2 (only if Nitrox), information includes (Fig. 76) -

- > NX icon
- > % O2 with O2SAT icons
- > Current PO2 value (ATA) with PO2 icon
- > FO2 Set Point for Gas in use with FO2 icon
- > Gas (tank) icon, gas in use (1 or 2)

- 5 sec or A (< 2 sec) - to revert to Main.
- L (press) - to activate Backlight.

Deep Stop Preview, information includes (Fig. 77) -

- > same as Main except Max Depth and EDT replaced by -
- > Stop Depth with FT (or M) icon, DS icon, and Stop Time as 2:00 with min and sec icons

- Revert to Main after 5 sec or A (< 2 sec).
- L (press) - to activate Backlight.

DEEP STOP MAIN, information includes (Fig. 78) -

- > Current Depth with FT (or M) icon
- > DTR (min) with NDC (or O2) and min icons
- > Stop Depth with FT (or M) icon
- > Stop icon (arrows/bar) and DS icon
- > Stop Time with min and sec icons, counting down
- > TLBG with icon
- > NX, (PZ+), CF, Gas icons - those that apply

- A (< 2 sec) - to access ALTs**.
- M (2 sec) - to access Gas Switching.
- S (< 2 sec) - to acknowledge alarms.
- L (press) - to activate Backlight.

** DS features up to 3 ALT displays which are similar to the No Deco Main, ALT1, and ALT2 displays, respectively.

SAFETY STOP MAIN (On), information includes (Fig. 79) -

- > Current Depth with FT (or M) icon
- > DTR (min) with NDC (or O2) and min icons
- > Stop Depth set with FT (or M) icon
- > Stop icon (arrows/bar)
- > Stop Time set with min and sec icons, counting down
- > TLBG with icon
- > NX, (PZ+), CF, Gas icons - those that apply

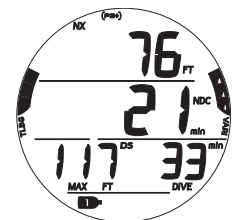


Fig. 73 - NO DECO MAIN

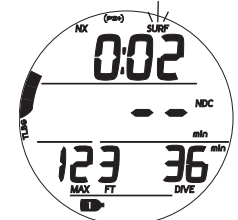


Fig. 74 - NO DECO MAIN (during < 10 min on surface)



Fig. 75 - NO DECO ALT 1

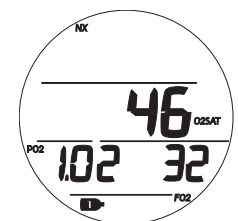


Fig. 76 - NO DECO ALT 2

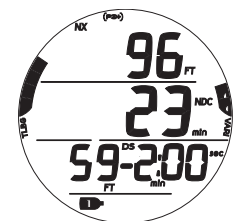


Fig. 77 - DS PREVIEW

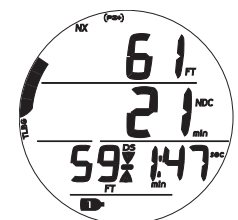


Fig. 78 - DS MAIN

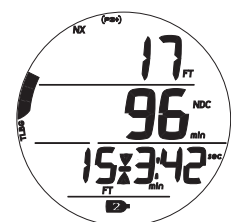


Fig. 79 - SS MAIN (On - Depth/Time set)

- A (< 2 sec) - to access ALTs**.
- M (2 sec) - to access Gas Switching.
- S (< 2 sec) - to acknowledge alarms.
- L (press) - to activate Backlight.

When the SS is set for Timer, the graphic TMR with Run Time counting up from 0:00 to 9:59 (min:sec) then 10 to 999 (min) will be displayed (Fig. 80) instead of a set Stop Depth/Time.

- A (< 2 sec) - to access Dive ALTs**.
- M (2 sec) - to access Gas Switching.
- S (< 2 sec)* - to acknowledge alarms.
- S (< 2 sec)* - to start/stop Timer.
- S (2 sec)*, when Timer is stopped - to reset it to 0:00.

** SS features up to 3 ALT displays which are similar to the No Deco Main, ALT1, and ALT2 displays, respectively.
 * Timer operation is blocked when S is pressed to silence alarms.

DECOMPRESSION

Decompression mode activates when theoretical No Decompression time and depth limits are exceeded.

Upon entry into Deco, the audible will sound and the alarm LED will flash. The full TLBG and Up Arrow icon will flash (Fig. 81) until the audible is silenced.

- S (< 2 sec) - to silence Audible.
- > Once within 10 FT (3 M) below the required Stop Depth (stop zone), the full Stop icon (both Arrows with Stop Bar) will be displayed solid.

To fulfill your decompression obligation, you should make a safe controlled Ascent to a depth slightly deeper than, or equal to, the required Stop Depth indicated and decompress for the Stop Time indicated.

The amount of decompression credit time that you receive is dependent on Depth, with slightly less credit given the deeper you are below the Stop Depth indicated.

You should stay slightly deeper than the required Stop Depth indicated until the next shallower Stop Depth appears. Then, you can slowly ascend to, but not shallower than that indicated Stop Depth.

DECO STOP MAIN, information includes (Fig. 82) -

- > Current Depth with FT (or M) icon
- > TAT (Total Ascent Time)* with TAT and min icons
- > Stop Depth with FT (or M) icon
- > Stop icon (arrows/bar)
- > Stop Time with min icon
- > Full TLBG with icon
- > NX, (PZ+), CF, Gas icons - those that apply

- A (< 2 sec) - to access ALTs.
- M (2 sec) - to access Gas Switching.
- S (< 2 sec) - to acknowledge alarms.

Deco Stop Alt 1, information includes (Fig. 83) -

- > Current Depth with FT (or M) icon
- > TAT (min) with TAT and min icons
- > Max Depth with MAX and FT (or M) icons
- > EDT (Elapsed Dive Time) with DIVE and min icons
- > Full TLBG with icon
- > NX, (PZ+), CF, Gas icons - those that apply

- A (< 2 sec) - to access ALT 2.
- Revert to Main in 5 sec, if A not pressed.

Deco Stop Alt 2, information includes (Fig. 84) -

- > Time of Day (hr:min)
- > Temperature with ° icon and graphic F (or C)

- A (< 2 sec) - to access ALT 2 (if Nitrox).
- Revert to Main in 5 sec, if A not pressed.

Deco Stop Alt 3 (if Nitrox), information includes (Fig. 85) -

- > NX icon
- > Gas 1 (or 2) icon, gas in use
- > % O2 with O2SAT icons
- > Current PO2 value (ATA) with PO2 icon
- > FO2 Set Point for Gas in use with FO2 icon

- 5 sec or A (< 2 sec) - to revert to Main.

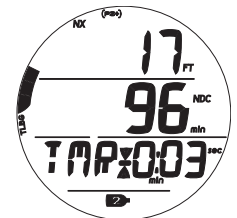


Fig. 80 - SS MAIN (set for Run Timer)

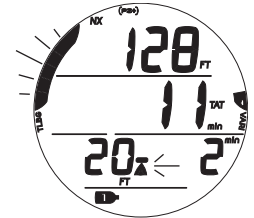


Fig. 81 - DECO ENTRY (during audible)

*TAT includes Stop Times at all required Deco Stops plus vertical Ascent Time based on the max rate allowed.

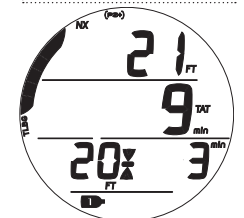


Fig. 82 - DECO STOP MAIN

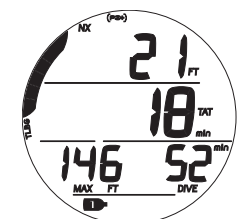


Fig. 83 - DECO STOP ALT 1



Fig. 84 - DECO STOP ALT 2

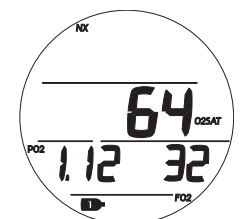


Fig. 85 - DECO STOP ALT 3

CV (CONDITIONAL VIOLATION)

Upon ascent above the required Deco Stop Depth, operation will enter CV during which no off gassing credit will be given.

ALTs are similar to those for Deco.

The Audible will sound and the alarm LED will flash. The full TLBG and Down Arrow icon will flash (Fig. 86) until the audible is silenced, then the TLBG will be solid.

- S (< 2 sec) - to silence audible.
- > Down Arrow icon continues to flash until descent to below required Stop Depth (within stop zone), then full Stop icon (Stop Bar with both Arrows) will be on solid.

If you descend deeper than the required Deco Stop before 5 minutes elapse, Deco operation will continue with no off gassing credit given for time above the Stop. Instead, for each minute above the Stop 1-1/2 minutes of penalty time will be added to required Stop Time.

- > The added penalty (deco) time will have to be worked off before obtaining off gassing credit.
- > Once the penalty time is worked off, and off gassing credit begins, required Deco Stop Depths and Time will decrease toward zero. The TLBG will recede into the No Deco zone and operation will revert to No Deco mode.

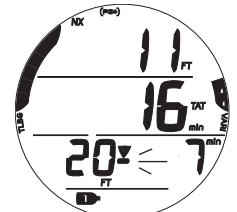


Fig. 86 - CV MAIN (after Audible)

DV 1 (DELAYED VIOLATION 1)

If you remain shallower than a Deco Stop Depth for more than 5 minutes, operation will enter DV1* which is a continuation of CV with penalty time still being added. Again, the audible will sound and the full TLBG will flash (Fig. 87) until it is silenced.

**The difference is that 5 minutes after surfacing from the dive, operation will now enter Violation Gauge Mode.*

- S (< 2 sec) - to silence audible.
- > Down Arrow icon continues to flash until descent to below required Stop Depth, then full Stop icon will be on solid.

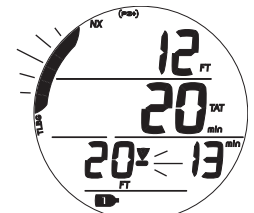


Fig. 87 - DV1 MAIN (during Audible)

DV 2 (DELAYED VIOLATION 2)

If the calculated Deco obligation requires a Stop Depth between 60 FT (18 M) and 70 FT (21 M), operation will enter DV2.

The Audible will sound and the alarm LED will flash. The full TLBG will flash (Fig. 88) until the audible is silenced.

- S (< 2 sec) - to silence audible.
- > Up Arrow icon flashes if 10 FT (3 M) deeper than the required Stop Depth.
- > Once within 10 FT (3 M) of and below the required Stop Depth, the Stop icon (both Arrows with Stop Bar) will be displayed solid.

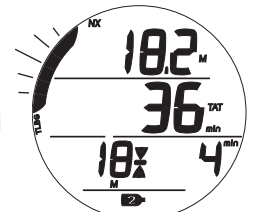


Fig. 88 - DV2 MAIN

DV 3 (DELAYED VIOLATION 3)

If you descend deeper than the MOD*, the audible will sound and the alarm LED will flash. Also, the Up Arrow will flash, and Current Depth and Max Depth will only indicate 3 dashes (---) signifying that you are Too Deep (Fig. 89).

**MOD is the Max Operating Depth at which the VEO can properly perform calculations or provide accurate display information. Refer to the Specifications in the back.*

Upon ascending above the MOD, Current Depth will be restored, however, Max Depth will continue to be displayed as dashes for the remainder of that dive. The Log for that dive will also display dashes for Max Depth.

VGM (VIOLATION GAUGE MODE)

During NORM dives, operation will enter VGM when Deco requires a Stop Depth greater than 70 FT (21 M). It will also enter VGM if Deco is activated during a dive in FREE mode, described later.

Operation would then continue in VGM during the remainder of that dive and for 24 hours after surfacing. VGM turns the VEO into a digital instrument without any decompression or oxygen related calculations or displays.

Upon activation of VGM, the Audible will sound and the alarm LED will flash. The graphic VIO and Up Arrow icon will flash.

VGM Dive Main, information includes (Fig. 90) -

- > Current Depth with FT (or M) icon
- > Graphic VIO (in place of Max Depth which moves to Alt 1) with Up Arrow icon, flashing until on surface
- > EDT with DIVE and min icons
- > NX, Gas icons - if they apply
- > VARI while ascending

- A (< 2 sec) - to access ALTs (similar to those for Deco).
- S (< 2 sec) - to acknowledge alarm.
- M (2 sec) - to access Gas Switching.

VGM on Surface

Upon surfacing, the VGM Dive Main will remain on display for 10 minutes with Surface Interval Time displayed in place of Current Depth with the SURF icon flashing. The graphic VIO will also still be displayed flashing.

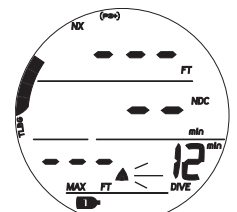


Fig. 89 - DV 3 MAIN

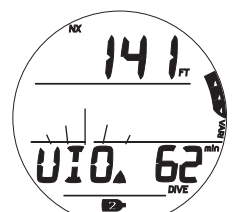


Fig. 90 - VGM MAIN (after Audible)

Operation will also enter VGM 5 minutes after surfacing from a dive in which a Delayed Violation occurred.

After 10 minutes elapse, VIO alternates with NOR (Fig. 91) until 24 hours elapse with no dives. Watch functions are as normal.

- > A full 24 hour continuous surface interval must then be served before all dive computer functions are restored.
- > During that 24 hours, VGM does not allow access to the Set F, Plan, Dsat, and FREE Mode features/screens.
- > The Fly countdown indicates time remaining before normal operation can resume with full features and functions.

HIGH PO2 (NORM ONLY)

- Warning >> at Alarm Set Point value minus .20 (1.00 to 1.40).
- Alarm >> at Set Point value, except in Deco then at 1.60 only.

When PO2 (partial pressure of oxygen) increases to the Warning level; the audible sounds, the Up Arrow icon will flash, and the PO2 value will flash (in place of max Depth) until the audible is silenced (Fig. 92).

- S (< 2 sec) - to acknowledge alarm.
- > When the audible is silenced, Max Depth is restored.

The Up Arrow remains on solid until PO2 decreases below the Warning level.

If PO2 continues to increase and reaches the Alarm Set Point, the audible sounds again.

- S (< 2 sec) - to acknowledge alarms
- > The PO2 value and Up Arrow icon will flash until PO2 decreases below the Alarm Set Point.

PO2 Alarm Main, information includes (Fig. 93) -

- > NX icon
- > Current Depth with FT (or M) icon
- > DTR with NDC (or O2) and min icons
- > PO2 value (ATA) with PO2 icon, flashing until < Set Point, then solid
- > Up Arrow icon, flashing until < Set Point, then solid
- > TLBG with icon
- > VARI while ascending
- > (PZ+), CF, Gas icons - those that apply

- A (< 2 sec) - to access ALTs (similar to those for No Deco).
- M (2 sec) - to access Gas Switching.
- L (press) - to activate Backlight.

High PO2 during Deco (Fig. 94)

The PO2 alarm setting does not apply when in Deco.

- > If PO2 reaches 1.60 while at a Deco Stop, the PO2 value (1.60) with icon will alternate with Deco Stop Depth/Time once each minute*.

**PO2 on for 10 seconds, Deco Stop Depth/Time on for 50 seconds until PO2 decreases below 1.60, then PO2 will not be displayed.*

HIGH O2 (NORM only)

- Warning >> at 80 to 99% (240 OTU).
- Alarm >> at 100% (300 OTU).

When O2 reaches the Warning Level; the audible sounds and the O2 value will flash (in place of DTR), Fig. 95, until the audible is silenced, then DTR will be restored.

- S (< 2 sec) - to acknowledge alarm.

If O2 reaches the Alarm level; the audible sounds and the Up Arrow icon and the O2 value will flash (in place of DTR) until on the surface (Fig. 96).

- S (< 2 sec) - to acknowledge alarm.
- A (< 2 sec) - to access ALTs (similar to those for No Deco).
- M (< 2 sec) - to access Gas Switching.
- L (press) - to activate Backlight.

High O2 during Deco

When O2 reaches the Warning Level; the audible sounds and the O2 value will flash (in place of TAT) until the audible is silenced, then TAT will be restored.

- S (< 2 sec) - to acknowledge alarm.

If O2 reaches the Alarm level; the audible sounds and the Up Arrow icon and the O2 value will flash (in place of TAT) until on the surface. Max Depth and EDT will be displayed in place of Deco Stop Depth/Time, Fig. 97.

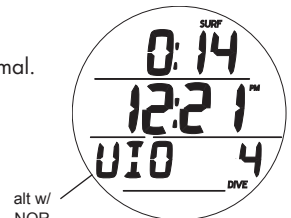


Fig. 91 - VGM SURF MAIN

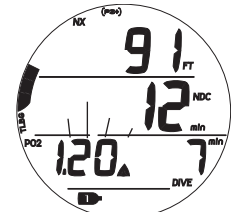


Fig. 92 - PO2 WARNING (during audible)

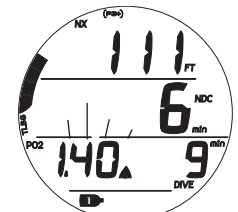


Fig. 93 - PO2 ALARM MAIN

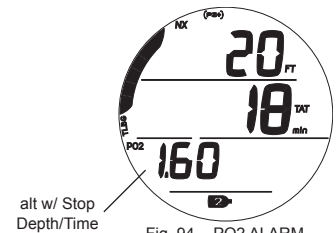


Fig. 94 - PO2 ALARM (while in Deco)

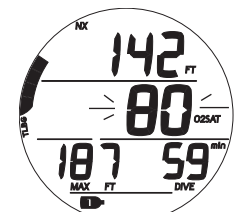


Fig. 95 - O2 WARNING (during audible)

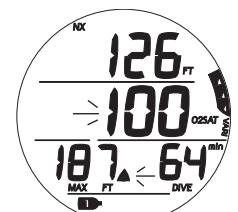


Fig. 96 - O2 ALARM

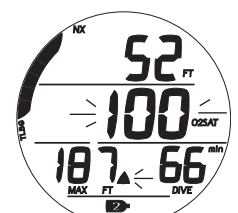


Fig. 97 - O2 ALARM (during Deco)

- S (< 2 sec) - to acknowledge alarm.
- A (< 2 sec) - to access ALTs (similar to those for No Deco).
- M (< 2 sec) - to access Gas Switching.
- L (< 2 sec) - to activate Backlight.

High O2 on Surface

Upon ascent to 2 FT (0.6 M) for 1 second (surfacing), the Dive Main screen is displayed for 10 minutes with access to the Dive ALTs allowed.

- If O2 is 100%, the value will flash on the Main until it is < 100%, then it will be replaced with dashes (if Violation) until 10 minutes elapse, then Time of Day.
- If you surface due to 100% O2 without having completed the Deco obligation, the full TLBG and O2 value (100) will flash with O2SAT icons for the first 10 minutes, then operation will enter VGM.
- Access to Dive ALTs and Gas Switching is allowed during the first 10 minutes, then access to the NORM Surface Menu is allowed.

GAS SWITCHING

- > Switching changes FO2 related displays and calculations from one Gas (FO2) setting to another.
- > Dives begin with Gas 1 and default to Gas 1 after 10 minutes on the surface following dives.
- > Switching is blocked while on the surface, except during the first 10 minutes after surfacing from a dive.
- > Can Switch when Dive Main screens are displayed.
- > Switching is blocked during sounding of alarms.
- > Can Switch between Gas regardless of depth.

To Switch Gas, while viewing a NORM Dive Main:

- M (2 sec) - to access Gas (in use) Preview (Fig. 98).
- M (2 sec)* again - to access other Gas' Preview (similar).
- S (2 sec)* - to Switch to other Gas, after a 3 second delay.

*Operation reverts to the Main in 10 seconds if M or S is not pressed.

Gas Switch Alarm

If the Switch to a Gas would result in PO2 => 1.60, the audible will sound and a warning message will flash (Fig. 99) until it is silenced, then the Preview screen will be restored.

Due to the possibility that there may be insufficient air available in the tank associated with that Gas, the switch is still allowed.

If the switch is made, the PO2 alarm will strike. If in Deco, the Up Arrow icon will not flash (you control action to be taken).



Fig. 98 - GAS 1 SWITCH PREVIEW



Fig. 99 - GAS SWITCH ALARM (all flash)

DIGITAL GAUGE

MODE

GAUG SURF MAIN, information includes (Fig. 100):

- > SI (hr:min) with SURF icon; if no dive yet, this is time since activation
- > Time of Day (hr:min) with AM (or PM) icon if 12 Hour Format; no icon if 24 Hour Format
- > Graphic GAU
- > Dive number with DIVE icon, up to 24 for that operating period (0 if no dive made yet)
- > Battery icon, if voltage is low

- A (< 2 sec) - to access ALT 1.
- A (hold) - to scroll forward through Menu items.
- M (< 2 sec) - to access SN.
- L (press) - to activate Backlight.



Fig. 100 - GAUG SURF MAIN (no dive yet)

Upon surfacing during dives, the Dive Main will remain on display for the first 10 minutes (with SI in place of Depth) after which the Surface Main will be displayed

GAUG SURF ALT 1, information includes (Fig. 101):

- > SI (hr:min) with SURF icon, prior to Last dive
- > Graphic LAST, indicating data is for dive previously conducted while still in GAUG mode
- > Max Depth of dive previously conducted while still in GAUG mode with MAX and FT (or M) icons
- > EDT (up to 999 min) with DIVE and min icons

- A (< 2 sec) - to access ALT 2.
- M (< 2 sec) - to step back to Main.
- L (press) - to activate Backlight.



Fig. 101 - GAUG SURF ALT 1 (Last Dive's Data)

GAUG SURF ALT 2, information includes (Fig.88):

- > Temperature with ° icon and graphic F (or C)
- > Altitude graphic, if EL2 (to EL7), blank if Sea level

- A (< 2 sec) - to access Fly.
- M (< 2 sec) - to step back to ALT 1.
- L (press) - to activate Backlight.



Fig. 102 - GAUG SURF ALT 2

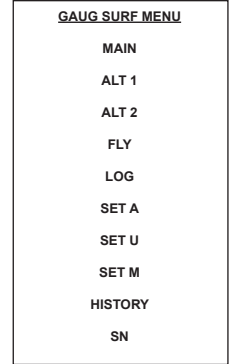
GAUG SURF MENU

In addition to the Main and ALT screens, the Gauge Surface Menu provides access to most other selections that are similar to those described previously for NORM Mode*.

**Refer to pages 40 through 61 for descriptions of those menu items.*

Button operations are also similar to those in NORM.

- A (< 2 sec) >> step forward through Menu items.
- A (hold) >> scroll forward through Menu items.
- M (< 2 sec) >> step back through Menu items.
- L (press) >> activate the SmartGlo Backlight.
- M (2 sec) or 2 min (of no button action) >> revert to Main.



**Upon descent to 5 FT (1.5 M) for 5 seconds,
operation will enter Gauge Dive Mode.**

GAUG DIVE MAIN, information includes (Fig. 103A, B) -

- > Current Depth with FT (or M) icon
- > Max Depth with MAX and FT (or M) icons; or graphic TMR
- > EDT (Elapsed Dive Time) with DIVE and min icons; or Run Time (min:sec to 9:59, then min only up to 999) with icons
- > VARI while ascending

- A (< 2 sec) - to access ALTs.
- A (2 sec) - to add/remove Run Timer*
- S (< 2 sec) - to start/stop Run Timer* or acknowledge alarms.
- L (press) - to activate Backlight.

* Once the Run Timer is added to the Main and started, it can be removed from the Main and will continue running in the background until it is again added to the Main. It can only be started and stopped while it is displayed on the Main.

Upon ascending to 2 FT (0.6 M) during a dive, Surface Interval time will be displayed with the SURF icon flashing for the first 10 minutes (Fig. 104).

After 10 minutes elapse, operation will revert to Surface Mode and full access given to the GAUG Surface Menu items. If a descent is made to 5 FT (1.5 M) for 5 seconds, the dive will be continued. Surface time will not be added to Dive Time.

**Once a dive is completed in Gauge Mode,
operation will lock into Gauge Mode for 24 hours.**

GAUG DIVE ALT 1, information includes (Fig. 105) -

This screen is bypassed if Max Depth is on the Main.

- > Current Depth with FT (or M) icon
- > Max Depth with MAX and FT (or M) icons
- > EDT (Elapsed Dive Time) with DIVE and min icons
- > VARI while ascending

- A (< 2 sec) - to access ALT 2.
- L (press) - to activate Backlight.

GAUG DIVE ALT 2, information includes (Fig. 106) -

This screen is ALT 1 if Max Depth is on the Main.

- > Time of Day (hr:min), with AM (or PM) icon if 12 Hour
- > Temperature with ° icon and graphic F (or C)

- 5 sec or A (< 2 sec), revert to Main.

DV 3 (DELAYED VIOLATION 3)

Upon descent deeper than the MOD**, the audible will sound and the alarm LED will flash. Also, the Up Arrow will flash, and Current Depth and Max Depth will only indicate 3 dashes (---) signifying that you are too deep (Fig. 107).

**MOD is Max Operating Depth. Refer to the Specifications in the back.

Upon ascending above the MOD, Current Depth will be restored. Max Depth will display 3 dashes for the remainder of that dive and will be recorded in the Log.

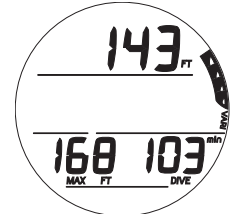


Fig. 103A - GAUG DIVE MAIN (without Run Timer)



Fig. 103B - GAUG DIVE MAIN (with Run Timer)

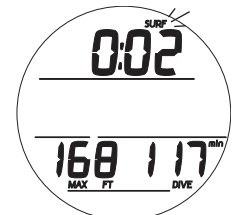


Fig. 104 - GAUG DIVE MAIN (during < 10 min on surface)

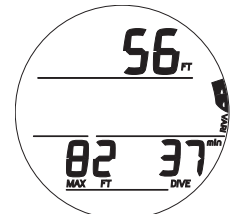


Fig. 105 - GAUG DIVE ALT 1 (if Timer is on Main)



Fig. 106 - GAUG DIVE ALT 2 (ALT 1 if no Timer on Main)

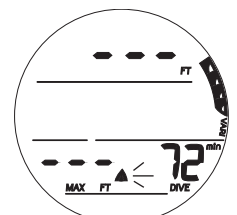


Fig. 107 - GAUG DIVE DV 3

FREE DIVE MODE

FREE SURF MAIN, information includes (Fig. 108):

- > Surface Interval time (min:sec up to 59:59, then hr:min) with SURF icon; if no dive yet, this is time since activation
- > Time of Day (hr:min) with AM (or PM) icon
- > Graphic FRE
- > Dive number with DIVE icon, up to 99 for that operating period (0 if no dive made yet)
- > (PZ+), CF, Battery icons - if they apply
- > TLBG with icon, if any after a NORM or FREE dive

- A (< 2 sec) - to access ALT 1.
- A (hold) - to scroll forward through Menu items.
- M (< 2 sec) - to access Set M Lead-in.
- L (press) - to activate Backlight.

Upon surfacing during dives, the Dive Main will remain on display for the first 1 minute (with SI in place of Depth) after which the Surface Main will be displayed.



Fig. 108 - FREE SURF MAIN (no dive yet)

pre dive SI (min:sec)



Fig. 109 - FREE SURF ALT 1 (Last Dive Data)

FREE SURF ALT 1, information includes (Fig. 109):

- > SI (min:sec or hr:min) with SURF icon, prior to Last dive
- > Graphic LAST, indicating data is for dive previously conducted while still in FREE mode
- > Max Depth of dive previously conducted while still in FREE mode with MAX and FT (or M) icons
- > EDT (min:sec or hr:min) with DIVE and min/sec icons

- A (< 2 sec) - to access ALT 2.
- M (< 2 sec) - to step back to Main.
- L (press) - to activate Backlight.

FREE SURF ALT 2, information includes (Fig. 110):

- > Temperature with ° icon and graphic F (or C)
- > Altitude graphic, if EL2 (to EL7), blank if Sea level

- A (< 2 sec) - to access CDT Lead-in.
- M (< 2 sec) - to step back to ALT 1.
- L (press) - to activate Backlight.

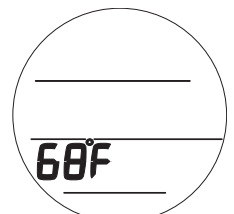
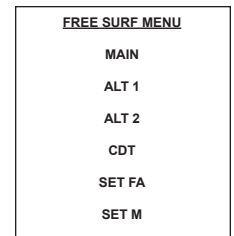


Fig. 110 - FREE SURF ALT 2

FREE SURF MENU

Button operations. -

- A (< 2 sec) >> step forward through Menu items.
- A (hold) >> scroll forward through Menu items.
- M (< 2 sec) >> step back through Menu items.
- S (press) >> activate the SmartGlo Backlight.
- M (2 sec) or 2 min (of no button action) >> revert to Main.



CDT (Countdown Timer)

While on the surface, the CDT can be set, started, and stopped. Once set and started, it continues to run in the background when a dive is started and becomes available as an ALT display.

CDT Lead-in, information includes (Fig. 111):

- > Graphics Cdt and FRE

- A (< 2 sec) - to step forward to Set FA Lead-in.
- M (< 2 sec) - to step back to ALT 2.
- S (< 2 sec) - to access CDT Status.

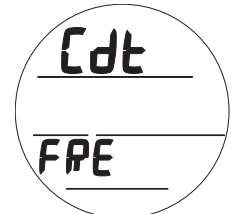


Fig. 111 - CDT LEAD-IN

CDT Status, information includes (Fig. 112):

- > Countdown Time (min:sec) remaining or set/ready to start, 0:00 if complete
- > Graphics CDT - with OFF (or ON) flashing

- A (< 2 sec) - to step up through OFF, ON, SEt (Fig. 113, page 37).
- M (< 2 sec) - to step back through OFF, ON, SEt.
- S (< 2 sec) - to save the setting.

- >> If On is saved and a CDT was set, the CDT will start counting down and operation will revert to the Lead-in.
- >> If Off is saved, the Timer will stop counting down and operation will revert to the Lead-in.
- >> If Set is saved, the Set CDT screen will be displayed.

- S (2 sec) - to revert to CDT Lead-in.



Fig. 112 - CDT STATUS (On, running)

The CDT will run in the background, while on the surface and during dives, until it counts down to 0:00, or it is turned OFF. When a set Countdown Time reaches 0:00, the audible will sound during which time the graphic CDT will be displayed flashing on the Surface or Dive Main until the audible is silent.

Set CDT, information includes (Fig. 113):

- > Graphics SEt and CDT
- > CDT (min:sec) with Minute digits flashing
- > min and sec icons

- A (hold) - to scroll upward through Minute Set Points at a rate of 8 per second from 0: to 59: in increments of 1: (min).
- A (< 2 sec) - to step upward through Set Points one at a time.
- M (< 2 sec) - to step back through Set Points one at a time.
- S (< 2 sec) - to save the Minute Set Point and flash the Seconds digits.
- A (hold) - to scroll upward through Seconds Set Points at a rate of 8 per second from :00 to :59 in increments of :01 (sec).
- A (< 2 sec) - to step upward through Set Points one at a time.
- M (< 2 sec) - to step back through Set Points one at a time.
- S (< 2 sec) - to save the CDT Set Point and revert to the CDT Status screen with OFF flashing.



Fig. 113 - CDT STATUS (to access Set)

SET FA MENU (FREE ALARMS)

Sequence >> Lead-in >> EDT >> DA1 >> DA2 >> DA3

Set Points remain as set until changed.

Set FA Lead-in, information includes (Fig. 115):

- > Graphics SEt and FA

- A (< 2 sec) - to step forward to Set M Lead-in.
- M (< 2 sec) - to step back to CDT Lead-in.
- S (< 2 sec) - to access Set EDT Alarm.

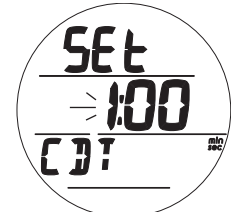


Fig. 114 - SET CDT

EDT ALARM

Factory set for a fixed 30 seconds, the EDT (Elapsed Dive Time) alarm sounds the audible every 30 seconds while underwater in FREE Dive Mode.

Set EDT Alarm, information includes (Fig. 116):

- > Graphics SEt and EDT -
- > OFF (or ON) flashing

- A (< 2 sec) - to toggle between ON and OFF.
- S (< 2 sec) - to save the setting and access Set DA1.
- S (2 sec) - to revert to Set FA Lead-in.

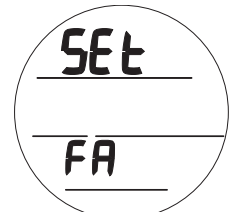


Fig. 115 - SET FA LEAD-IN

DA (DEPTH ALARMS)

There are 3 Free Depth Alarms (DAs) that can be set at progressively deeper depths*.

*The DA2 setting must be deeper than DA1 and DA3 must be deeper than DA2.

Set DA1 Alarm, information includes (Fig. 117A, B):

- > Graphics SEt and - dA1
- > Graphic OFF, or Depth value with MAX and FT (or M) icons, flashing

- A (hold) - to scroll upward through Set Points at a rate of 8 per second from OFF to 30 to 330 FT (10 to 100 M) in increments of 10 FT (1 M).
- A (< 2 sec) - to step upward through Set Points one at a time.
- M (< 2 sec) - to step back through Set Points one at a time.
- S (< 2 sec) - to save the setting.

- > If OFF is saved, operation reverts to Set FA Lead-in.
- > If a Depth value is saved, Set DA 2 is accessed.

- S (2 sec) - to revert to Set EDT Alarm.

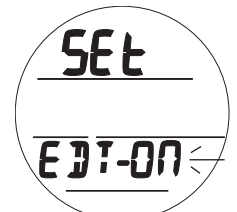


Fig. 116 - SET EDT ALARM

Set DA 2 and DA 3 are similar with Depth values beginning 1 increment higher (deeper) than the previous selection set. If DA 1 is set for 100 FT, DA 2 settings start at 110 FT.

SET M (DIVE MODE)

Set M and selecting a Dive Operating Mode (Fig. 118) is similar to that previously described for NORM. Refer to page ??.

SHARED SETTINGS

To change items that FREE Mode shares with NORM Mode, access the NORM Menu, then Set U, then -

- > Wet Activation
- > Units
- > Algorithm
- > Conservative Factor
- > Glo Duration

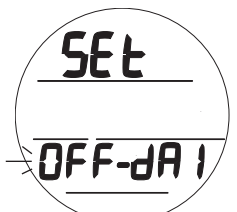


Fig. 117A - SET DA1

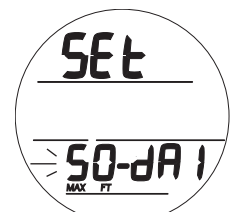


Fig. 117B - SET DA1

Upon descent to 5 FT (1.5 M) for 5 seconds, operation will enter Free Dive Mode.

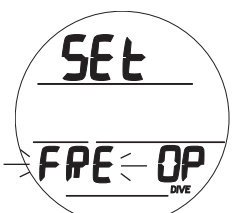


Fig. 118 - SET M

FREE DIVE MAIN, information includes (Fig. 119) -

- > Current Depth with FT (or M) icon
- > DTR (min) with NDC and min icons
- > Temperature with ° icon and graphic F (or C)
- > EDT (min:sec) with DIVE and min sec icons
- > TLBG with icon
- > (PZ+), CF icons - those that apply

- A (< 2 sec) - to access ALTs.
- L (press) - to activate Backlight.

Upon ascending to 2 FT (0.6 M) during a dive, Surface Interval time will be displayed with the SURF icon flashing for the first 1 minute and NDC will be displayed as 2 dashes (Fig. 120).

- A (< 2 sec) - to access Dive ALTs.
- L (press) - to activate Backlight.

After 1 minute elapses, operation will revert to Surface Mode and full access given to the FREE Surface Menu items.

If a descent is made to 5 FT (1.5 M) for 5 seconds, the dive will be continued. Surface time will not be added to Dive Time.

FREE DIVE ALT 1, information includes (Fig. 121) -

- > Remaining Countdown Time (min:sec) if On and a CD is in progress or 0:00 if On and the CD is complete, with colon flashing. If Off, the CD Time previously set is displayed with colon solid indicating it is ready to start.
- > Graphics CDT -, and OFF (or ON) flashing

- S (< 2 sec) - to toggle between ON and OFF*.
- A (< 2 sec) - to access ALT 2.
- Revert to Main in 10 sec, if S or A is not pressed.
- L (press) - to activate Backlight.

**Start or Stop the countdown and revert to Main.*

When On, the CDT will run in the background until it counts down to 0:00, or it is turned Off.

FREE DIVE ALT 2, information includes (Fig. 122) -

- > Time of Day (hr:min), with AM (or PM) icon if 12 Hour
- > TMax Depth with MAX and FT (or M) icons

- 5 sec or A (< 2 sec), revert to Main.
- L (press) - to activate Backlight.

FREE DIVE ALARMS

FREE mode alarms, which are separate from NORM (or GAUG) alarms, sound either 1 or 3 times as 3 beeps then clear.

They cannot be acknowledged or silenced.

FREE CDT Alarm

When a set Countdown Time reaches 0:00, the audible will sound during which time the graphic CDT will flash on the Main in place of Temperature (Fig. 123).

FREE EDT Alarm

When set On, the EDT alarm activates every 30 seconds during a dive. The audible will sound during which time the graphic EDT (in place of Temperature) and time digits will flash on the Main (Fig. 124).

FREE Depth Alarms

When set On, the Depth alarms (1, 2, 3) activate at their respective set Depths. The audible will sound during which time the Depth digits, and graphic DA1 (2, 3) will flash on the Main in place of Temperature (Fig. 125).

High Nitrogen Alarms

When nitrogen increases to the caution level (4 TLBG segments), the audible will sound during which time the TLBG segments will flash on the Main (Fig. 126).

In the event that nitrogen continues to increase and reaches the Deco level, the audible will sound again during which time all 5 TLBG segments, the Up Arrow icon, and the graphic VIO (in place of Temperature), will flash, and NDC will display 0.

When the audible is silent, the TLBG and NDC digits are removed. The graphic VIO and Up Arrow icon flash (Fig. 127) until on the surface, then the Up Arrow is removed.

The graphic VIO flashes until 1 minute elapses on the surface, then it alternates with FRE (Fig. 128) and operation reverts to Violation Gauge Mode for 24 hours.

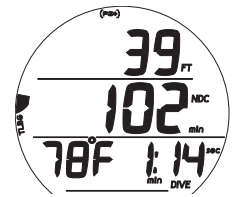


Fig. 119 - FREE DIVE MAIN

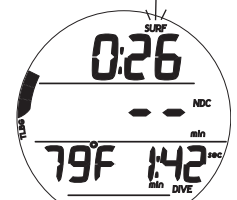


Fig. 120 - FREE DIVE MAIN (during < 1 min on surface)



Fig. 121 - FREE DIVE ALT 1



Fig. 122 - FREE DIVE ALT 2

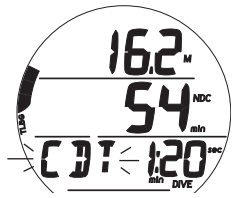


Fig. 123 - CDT AL

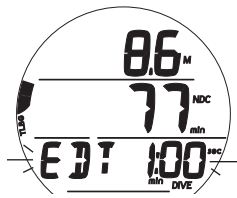


Fig. 124 - EDT AL

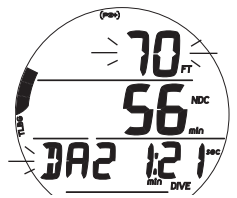


Fig. 125 - DEPTH AL

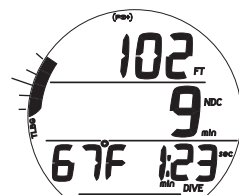


Fig. 126 - FREE TLBG AL (during audible)

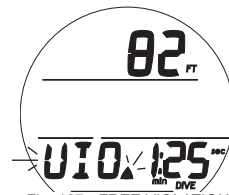


Fig. 127 - FREE VIOLATION (after audible)

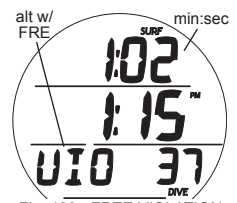


Fig. 128 - FREE VIOLATION (after 1 min on surface)

REFERENCE

PC INTERFACE

The GEO 2 is configured with a Data Port (Fig. 129a) that enables it to be connected to a PC USB port using a special interface cable that is available as an optional accessory.

The USB Driver required for the interface system is downloadable from the Oceanic Worldwide web site.

The Settings Upload portion of the program can be used to set/change the Set T group (Watch Time/Date), Set A group (Alarms), Set U group (Utilities), and Set FA group (FREE Alarms). The FO2 and Operating Mode settings must be entered using the button controls.

Information available for retrieval* (download) from the GEO 2 to the PC Download portion of the program includes items such as dive number, surface interval time, depth, dive time, start date and time, lowest temperature, sampling rate, Set Points, TLBG, VARI, and Gas Switching events.

**FREE Dive information is only available using the PC interface system.*

The unit checks for the presence of an interface device connection to the Data Port once every second* while in Watch mode.

**Checks are not made if the Wet Activation contacts are wet.*

Upon sensing an interface connection, the requesting device (PC) connects to the GEO 2 and is prepared for upload of settings or download of data which is then initiated using the PC program. During the process, there is a 2 minute window during which a PC countdown screen is displayed on the GEO 2 (Fig. 130). Upload or download must be started during this time.

Prior to attempting to download data from your GEO 2 or upload settings to it, review the HELP section of the interface program. Recommended is to print those sections of HELP that you consider appropriate for your interface activities.

PC requirements:

- IBM®, or compatible, Personal Computer with USB Port
- Intel® Pentium 200 MHz or better microprocessor
- Microsoft® Windows® 98 Second Edition, ME, NT, 2000, XP, or Vista
- Super VGA card or compatible video graphics adaptor (256 color or greater) with a minimum 800 X 600 pixel screen area of display settings
- 16MB of available RAM
- 20MB of available hard drive storage
- Mouse
- CD Rom drive
- Printer

For software updates, refer to the Oceanic web site at ->> www.OceanicWorldwide.com

For support, call OceanLog Support toll free at ->> **(866) 732-7877**, 8 Am to 5 Pm USA Pacific time.

CARE AND CLEANING

Protect your GEO 2 from shock, excessive temperatures, exposure to chemicals, and tampering. Protect the lens against scratches with a Instrument Lens Protector. Small scratches will naturally disappear underwater.

- Soak and rinse the GEO 2 in fresh water at the end of each day of diving, and check to ensure that the areas around the Low Pressure (Depth) Sensor (Fig. 131a), PC Interface Data Port (Fig. 131b), and buttons are free of debris or obstructions.
- To dissolve salt crystals, use lukewarm water or a slightly acidic bath (50% white vinegar/50% fresh water). After removal from the bath, place the GEO 2 under gently running fresh water and towel dry before storing.
- Transport your GEO 2 cool, dry, and protected.

INSPECTIONS AND SERVICE

Your GEO 2 should be inspected annually by an Authorized Oceanic Dealer who will perform a factory prescribed function check and inspection for damage or wear. To keep the 2 year limited warranty in effect, this inspection must be completed one year after purchase (+/- 30 days).

Oceanic recommends that you continue to have an inspection performed every year to ensure it is working properly. The costs of annual inspections, or inspections relating to water tight integrity, are not covered under the terms of the 2 year limited warranty.

To Obtain Service:

Take your GEO 2 to your local Authorized Oceanic Dealer.

If required to return your GEO 2 to the Oceanic USA factory:

- Obtain an RA (Return Authorization) number by contacting Oceanic USA at 510/562-0500 or send an e-mail to service@oceanicusa.com.
- Record all dive data in the Log and/or download the data stored in memory. All data will be erased during factory service.
- Package it using a protective cushioning material.
- Include a legible note stating the specific reason for return, your name, address, daytime phone number, serial number(s), and a copy of your original sales receipt and Warranty Registration.
- Send freight prepaid and insured using a traceable method.
- Non-warranty service must be prepaid. COD is not accepted.

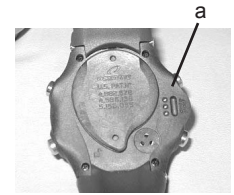


Fig. 129 - DATA PORT

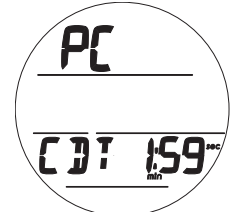


Fig. 130 - PC INTERFACE

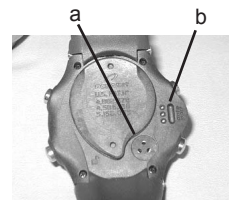


Fig. 131 - CASE BACK

- Additional information is available on the Oceanic web site OceanicWorldwide.com or on the local Oceanic web site that serves your global region.

The procedures that follow must be closely adhered to. Damage due to improper battery replacement is not covered by the GEO 2's warranty.

When the battery is removed, settings and calculations for repetitive dives are retained in the unit's memory while a new battery is installed.

BATTERY REPLACEMENT

The Battery Compartment should only be opened in a dry and clean environment with extreme care taken to prevent the entrance of moisture or dust.

As an additional precautionary measure to prevent formation of moisture in the Battery Compartment, it is recommended that the Battery be changed in an environment equivalent to the local outdoor temperature and humidity (e.g., do not change the Battery in an air conditioned environment then take it outside during a hot sunny day).

Inspect the Buttons, Lens, and Housing to ensure they are not cracked or damaged. If there is any sign of moisture in the GEO 2, DO NOT attempt to use it for diving until it receives proper service by an authorized Oceanic facility.

Battery Removal

- Locate the Battery Compartment on the back of the unit.
- Rotate the Battery Cover clockwise 10 degrees using the special Battery Cover Tool (Fig. 132A), or by pushing the lower portion to the left while pushing the upper portion to the right using your thumbs (Fig. 132B).
- Lift the Cover with O-ring up and away from the Housing.
- Using care not to damage the Contact (Fig. 133a), slide the Battery up and out of the left side of the Compartment.
- Discard the Battery according to local regulations governing disposal of Lithium batteries.

CAUTION: DO NOT allow a metal object to short circuit the top of the Battery, which is positive (+), to the negative (-) contact of the Battery Compartment.

Inspection

- Closely check all of the sealing surfaces for any signs of damage that might impair proper sealing.
- Inspect the Buttons, Lens, and Housing to ensure they are not cracked or damaged.
- Remove the Battery Cover O-ring and inspect it for any signs of deterioration or deformity. DO NOT use tools to remove the O-ring.
- To ensure proper sealing, O-ring replacement is highly recommended each time the Battery is replaced.
- Closely examine the threads of the Battery Cover and Housing for any signs of damage that might prevent proper threading.
- Closely examine the inside of the Battery Compartment for any signs of corrosion indicating entrance of moisture into the unit.
- If it is necessary to clean the Battery Compartment, flush it thoroughly with a solution of 50% white vinegar and 50% fresh water. Rinse with fresh water, and allow to dry overnight or blow dry with a hair dryer set at no heat.

WARNING: If damage, moisture, or corrosion is found, return your GEO 2 to an Authorized Oceanic Dealer, and DO NOT attempt to use it until it has received factory prescribed service.

Battery Installation

- Slide a new 3 volt type CR2430 Lithium Battery, negative side down into the Battery Compartment. Slide it in from the left side (Fig. 134) and ensure that it slides under the contact clip on the lower/right rim of the cavity.
- Lightly lubricate the new Cover O-ring* with silicone grease and place it on the inner rim of the Battery Cover. Ensure that it is evenly seated (Fig. 135).

**The O-ring must be a genuine Oceanic part that can be purchased from an Authorized Oceanic Dealer. Use of any other O-ring will void the warranty.*

- Carefully place the Battery Cover (with O-ring) into position on the rim of the Battery Compartment, then press it evenly and completely down into place.
- Maintain the Battery Cover securely in place and turn it counter clockwise 10 degrees using the special Battery Cover tool (Fig. 136A), or by pushing the lower portion to the right while pushing the upper portion to the left (Fig. 136B).

Testing

- Observe the LCD display to ensure it is consistently clear and sharp in contrast throughout the screen.
- Set the Date and Time.
- Verify all Set Points prior to diving.

If any portions of the display are missing or appear dim, or if a Low Battery Condition is indicated, return your GEO 2 to an Authorized Oceanic Dealer for a complete evaluation before attempting to use it.



Fig. 132A - COVER REMOVAL (using tool)



Fig. 132B - COVER REMOVAL (using thumbs)

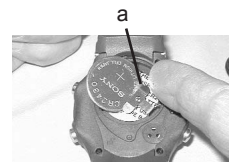


Fig. 133 - BATTERY REMOVAL



Fig. 134 - BATTERY INSTALL



Fig. 135 - COVER O-RING



Fig. 136A - COVER INSTALL (using tool)



Fig. 136B - COVER INSTALL (using thumbs)

ALTITUDE SENSING AND ADJUSTMENT

Altitude (i.e., ambient pressure) is measured upon activation and every 15 minutes until a dive is made.

- > Measurements are only taken when the unit is dry.
- > Two readings are taken, the second reading 5 seconds after the first. The readings must be within 1 foot (30 cm) of each other to record that ambient pressure as the current Altitude.
- > No adjustments are made during any time that the Wet Contacts are bridged.
- > When diving in high altitude waters from 3,001 to 14,000 feet (916 to 4,270 meters), the GEO 2 automatically adjusts to these conditions providing corrected Depth, and reduced No Deco and O₂ Times at intervals of 1,000 feet (305 meters).
- > When the Conservative Factor is set On, NDLs are calculated based upon the next higher 3,000 foot (915 meter) Altitude.
- > At Sea Level, calculations are based upon an Altitude of 6,000 feet.
- > All adjustments for Altitudes greater than 11,000 feet (3,355 meters) are then made to allowable dive times for 14,000 feet (4,270 meters).
- > The GEO 2 will not function as a Dive Computer above 14,000 feet (4,270 meters).

ADDITIONAL INFORMATION PERTAINING TO FREE DIVE MODE

- Although breathing apparatus is not utilized for Free Dive activities, nitrogen tissue loading remains a factor. Nitrogen loading is calculated based upon a fixed FO₂ of Air.
- Since a user has the option of alternating between SCUBA and Free Dive activities within a 24 hour period, nitrogen calculations and the displayed value of No Deco Dive Time Remaining (NDC time) are carried over from one operating mode to the other, which permits the user to maintain awareness of nitrogen absorption and offgasing status.
- The mathematical models currently used in the GEO 2 are based on no decompression/decompression multilevel repetitive dive schedules.
- These algorithms do not take into account the physiological changes associated with the high pressures that competitive type Free diving can expose a diver to.

ADDITIONAL WARNINGS

- **Ensure that you know which Operating Mode is selected (NORM, GAUG, or FREE) prior to commencing any dive.**
- **Conducting Free dives within a 24 hour period after conducting SCUBA dives, combined with the effects of multiple rapid Free Dive ascents, increases your risk of decompression sickness. Such activities may result in accelerated entry into decompression which could cause serious injury or death.**
- **Combining competitive type Free dive activities that involve multiple descents/ascents with activities utilizing SCUBA during the same 24 hour period is not recommended. Presently, there is no data relating to such activities.**
- **It is highly recommended that anyone planning to become involved in competitive type Free dive activities obtain proper instruction and training from a recognized Free Diving trainer. It is imperative that the physiological affects be understood and the diver is physically prepared.**

TECHNICAL DATA

PZ+ ALGORITHM >> NDLS (minutes) at ALTITUDE (Imperial)

Altitude (feet)	0 to 3000	3001 to 4000	4001 to 5000	5001 to 6000	6001 to 7000	7001 to 8000	8001 to 9000	9001 to 10000	10001 to 11000	11001 to 12000	12001 to 13000	13001 to 14000
30	197	150	141	134	128	122	117	112	107	99	94	89
40	109	81	75	71	68	65	62	60	57	55	53	51
50	65	53	51	49	47	44	42	39	37	35	34	33
60	48	37	35	33	32	30	28	26	24	23	22	21
70	35	26	24	23	21	20	19	18	17	16	16	14
80	26	19	18	17	16	15	14	13	12	11	11	10
90	19	15	14	13	12	11	10	9	9	8	8	8
100	16	11	10	10	9	9	8	8	7	7	7	7
110	12	9	8	8	8	7	7	7	6	6	6	5
120	10	8	7	7	7	6	6	6	5	5	5	5
130	8	7	6	6	6	5	5	5	5	5	4	4
140	7	6	5	5	5	5	5	4	4	4	4	4
150	6	5	5	5	5	4	4	4	4	4	4	3
160	6	5	5	4	4	4	4	4	4	3	3	3
170	5	4	4	4	4	4	3	3	3	3	3	3
180	5	4	4	4	3	3	3	3	3	3	3	3
190	4	4	4	4	3	3	3	3	3	3	3	3

PZ+ ALGORITHM >> NDLS (minutes) at ALTITUDE (Metric)

Altitude (meters)	0 to 915	916 to 1220	1221 to 1525	1526 to 1830	1831 to 2135	2136 to 2440	2441 to 2745	2746 to 3050	3051 to 3355	3356 to 3660	3661 to 3965	3966 to 4270
9	217	161	151	143	136	130	124	119	104	110	103	97
12	115	87	81	75	72	68	65	63	60	58	55	54
15	68	55	53	51	49	47	44	42	39	37	36	34
18	50	39	37	35	33	32	30	28	26	24	23	22
21	36	28	26	24	23	21	20	19	18	17	16	16
24	27	20	19	18	17	16	15	14	13	12	11	11
27	20	16	15	13	12	11	11	10	9	9	8	8
30	16	12	11	10	9	9	9	8	8	7	7	7
33	13	9	9	8	8	7	7	7	7	6	6	6
36	10	8	7	7	7	6	6	6	5	5	5	5
39	9	7	6	6	6	6	5	5	5	5	5	4
42	8	6	6	5	5	5	5	5	4	4	4	4
45	6	5	5	5	5	4	4	4	4	4	4	4
48	6	5	5	4	4	4	4	4	4	3	3	3
51	5	4	4	4	4	4	4	3	3	3	3	3
54	5	4	4	4	4	3	3	3	3	3	3	3
57	5	4	4	3	3	3	3	3	3	3	3	3

DSAT ALGORITHM >> NDLS (minutes) at ALTITUDE (Imperial)

Altitude (feet)	0 to 3000	3001 to 4000	4001 to 5000	5001 to 6000	6001 to 7000	7001 to 8000	8001 to 9000	9001 to 10000	10001 to 11000	11001 to 12000	12001 to 13000	13001 to 14000
30	260	201	187	175	165	156	148	141	135	130	124	118
40	137	103	96	90	85	80	76	72	69	66	63	61
50	81	63	60	58	55	52	48	45	43	41	39	37
60	57	43	40	38	36	34	33	31	30	29	28	27
70	40	31	30	28	27	26	24	23	22	20	19	18
80	30	24	23	21	20	19	18	17	16	16	14	13
90	24	19	18	17	16	15	14	13	12	11	10	10
100	19	15	14	13	12	11	10	10	9	9	8	8
110	16	12	11	10	9	9	8	8	8	7	7	7
120	13	9	9	8	8	8	7	7	7	6	6	6
130	11	8	8	7	7	7	6	6	6	6	5	5
140	9	7	7	6	6	6	6	5	5	5	5	5
150	8	6	6	6	5	5	5	5	5	4	4	4
160	7	6	5	5	5	5	4	4	4	4	4	4
170	7	5	5	5	4	4	4	4	4	4	4	3
180	6	5	5	4	4	4	4	4	4	3	3	3
190	5	4	4	4	4	4	3	3	3	3	3	3

DSAT ALGORITHM >> NDLS (minutes) at ALTITUDE (Metric)

Altitude (meters)	0 to 915	916 to 1220	1221 to 1525	1526 to 1830	1831 to 2135	2136 to 2440	2441 to 2745	2746 to 3050	3051 to 3355	3356 to 3660	3661 to 3965	3966 to 4270
9	283	217	204	190	178	168	159	151	144	138	132	127
12	144	112	104	97	90	85	81	77	73	70	67	64
15	85	66	63	60	57	55	52	49	46	43	41	39
18	59	45	42	40	38	36	34	32	31	30	29	28
21	41	33	31	29	28	27	26	24	23	21	20	19
24	32	26	24	22	21	20	19	18	17	16	15	14
27	25	19	18	17	16	16	14	13	12	12	11	10
30	20	16	15	13	12	12	11	10	10	9	9	8
33	17	12	11	11	10	9	9	8	8	8	7	7
36	14	10	9	9	8	8	7	7	7	6	6	6
39	11	8	8	7	7	7	6	6	6	6	5	5
42	9	7	7	7	6	6	6	5	5	5	5	5
45	8	6	6	6	6	5	5	5	5	5	4	4
48	7	6	6	5	5	5	5	4	4	4	4	4
51	6	5	5	5	4	4	4	4	4	4	4	4
54	6	5	5	4	4	4	4	4	4	3	3	3
57	5	4	4	4	4	4	3	3	3	3	3	3

SPECIFICATIONS

CAN BE USED AS

- Watch
- Dive Computer (Air or Nitrox)
- Digital Depth Gauge/Timer
- Free Dive activity

DIVE COMPUTER PERFORMANCE

- Buhlmann ZHL-16c based PZ+, or DSAT based, algorithm.
- No Deco limits closely follow PADI RDP.
- Decompression in agreement with Buhlmann ZHL-16c and French MN90.
- No Deco Deep Stops - Morroni, Bennett.
- Deco Deep Stops (not recommended) - Blatteau, Gerth, Gutvik.
- Altitude - Buhlmann, IANTD, RDP (Cross).
- Altitude corrections and O2 limits based on NOAA tables.

OPERATIONAL PERFORMANCE

- | | |
|------------------|-------------------|
| Function: | <u>Accuracy:</u> |
| • Depth | ±1% of full scale |
| • Timers | 1 second per day |

Dive Mode Activation:

- Must be in Dive Computer mode, if Wet Activation is set OFF.
- Automatic by immersion in water, if Wet Activation is set ON.
- Cannot be manually activated deeper than 4 FT (1.2 M), if Wet Activation is set OFF.
- Cannot operate as a DC at elevations higher than 14,000 feet (4,270 meters)

Dive Counter:

- NORM/GAUG displays Dives #1 to 24, FREE displays #1 to 99 (0 if no dive made yet).
- Resets to Dive #1, upon diving (after 24 hours with no dives).

Dive Log Mode:

- Stores 24 most recent NORM/GAUG dives in memory for viewing.
- After 24 dives, adds 25th dive in memory and deletes the older dive.

Altitude:

- Operational from sea level to 14,000 feet (4,270 meters) elevation.
- Measures ambient pressure every 30 minutes in Watch mode, when Dive Computer mode is accessed, and every 15 minutes while in DC Surface modes.
- Does not measure ambient pressure when Wet.
- Compensates for Altitudes above sea level beginning at 3,001 feet (916 meters) elevation and every 1,000 feet (305 meters) higher.

Power:

- (1) 3 vdc, CR2430, Lithium battery (Panasonic or equivalent)
- Shelf life Up to 7 years when shipped from factory in deep sleep mode.
- Replacement User (annual recommended).
- Use Life 1 year or 300 dive hours if (2) 1 hour dives per day.

Battery Indicator:

- Warning - icon on solid when <= 2.75 volts, Battery change recommended.
- Alarm - icon on flashing when <= 2.50 volts, change the Battery, will not function as a DC.

Operating Temperature:

- Out of the water - between 20 °F and 140 °F (-6 and 60 °C).
- In the water - between 28 °F and 95 °F (-2 and 35 °C).

BAR GRAPHS:

- | | |
|------------------------|-----------------|
| TLBG | <u>segments</u> |
| • No Deco Normal zone | 1 to 3 |
| • No Deco Caution zone | 4 |
| • Decompression zone | 5 (all) |

VARI	<u>60 FT (18 M) & Shallower</u>			<u>Deeper than 60 FT (18 M)</u>		
	<u>segments</u>	<u>FPM</u>	<u>MPM</u>	<u>segments</u>	<u>FPM</u>	<u>MPM</u>
	0	0 - 10	0 - 3	0	0 - 20	0 - 6
• Normal zone	1	11 - 15	3.5 - 4.5	1	21 - 30	6.5 - 9
• Normal zone	2	16 - 20	5 - 6	2	31 - 40	9.5 - 12
• Normal zone	3	21 - 25	6.5 - 7.5	3	41 - 50	12.5 - 15
• Caution zone	4	26 - 30	8 - 9	4	51 - 60	15.5 - 18
• Too Fast zone (flashing)	5 (all)	> 30	> 9	5 (all)	> 60	> 18

SPECIFICATIONS (CONTINUED)

<u>NUMERIC DISPLAYS:</u>	<u>Range:</u>	<u>Resolution:</u>
• Main Time of Day	00:00_00 to 23:59_59 hr:min_sec	1 second
• Dual Time of Day	00:00 to 23:59 hr:min	1 minute
• Dual Time Differential	- 23 to 0 to + 23:59 hr	1 hour
• Watch Countdown Timer	23:59 to 0:00 hr:min	1 minute
• Watch Chrono Lap Time	0:00 to 1:59:59_99 (hr:min:sec_01 sec)	.01 second
• PCI Countdown Timer	1:59 to 0:00 min:sec	1 second
• Temperature	0 to 99°F (-18 to 60°C)	1°
• Altitude Level	Sea, EL2 to EL7	1 level
• Depth (display)	0 to 330 FT (100 M)	1 FT (.1/1 M)
• Max Operating Depth	330 FT (100 M)	
• Time to Fly	23:50 to 0:00 hr:min* (* starting 10 min after the dive)	1 minute
• Time to Desaturate	23:50 to 0:00 hr:min* (* starting 10 min after the dive)	1 minute

<u>NUMERIC DISPLAYS:</u>	<u>Range:</u>	<u>Resolution:</u>
• NORM/GAUG SI Time	0:00 to 23:59 hr:min	1 minute
• NORM/GAUG Dive No.	0 to 24	1
• NORM/GAUG EDT	00 to 999 min	1 minute
• FO2 Set Points	Air, 21 to 100 %	1 %
• PO2 Value	0.00 to 5.00 ATA	.01 ATA
• O2 Saturation	0 to 100 %	1 %
• Dive Time Remaining	0 to 999 min	1 minute
• No Deco Deep Stop Time	2:00 to 0:00 min:sec	1 second
• No Deco Safety Stop Time	5:00 to 0:00 min:sec	1 second
• Safety Stop Run Timer	0:00 to 9:59 min:sec	1 second
• GAUG Dive Run Timer	0 to 999 min	1 minute
• Deco Stop Time	0 to 999 min	1 minute
• Total Ascent Time	0 to 999 min	1 minute
• Violation Countdown Timer	23:50 to 0:00 hr:min	1 minute
• FREE SI Time (< 1 hr)	0:00 to 59:59 min:sec	1 second
• FREE SI Time (=> 1 hr)	1:00 to 23:59 hr:min	1 minute
• FREE Dive No.	0 to 99	1
• FREE EDT (< 10 min)	0:00 to 9:59 min:sec	1 second
• FREE EDT (=> 10 min)	10 to 999 min	1 minute
• FREE Countdown Timer	59:59 to 0:00 min:sec	1 second

INSPECTION / SERVICE RECORD

Serial Number: _____

Firmware Rev: _____

Date of Purchase: _____

Purchased from: _____

Below to be filled in by an Authorized Oceanic Dealer:

Date	Service Performed	Dealer/Technician

OCEANIC WORLD WIDE

OCEANIC USA
 2002 Davis Street
 San Leandro, CA 94577
 Tel: 510/562-0500
 Fax: 510/569-5404
 Web: www.OceanicWorldwide.com
 E-mail: hello@oceanicusa.com

OCEANIC NORTHERN EUROPE
 Augsburg, Germany
 Tel: +49 (0) 821 810342 0 Fax: +49 (0) 821 810342 29
 Web: www.oceanic.de
 E-mail: office@oceanic.de

OCEANIC ITALY
 Genova, Italy
 Tel: +39 010 545 1212 Fax: +39 010 518 4232
 Web: www.oceanicitalia.com
 E-mail: info@oceanicitalia.com

OCEANIC UK
 Devon, United Kingdom
 Tel: (44) 1404-891819 Fax: +44 (0) 1404-891909
 Web: www.OceanicUK.com
 E-mail: helpyou@oceanicuk.com

OCEANIC FRANCE
 Nice, France
 Tel: +33.(0)4 93 72 43 00 Fax: +33.(0)4 93 72 43 05
 E-mail: info@subaquadis.fr

OCEANIC AUSTRALIA
 Rosebud, Victoria, Australia
 Tel: 61-3-5986-0100 Fax: 61-3-5986-1760
 Web: www.OceanicAUS.com.au
 E-mail: sales@OceanicAUS.com.au

OCEANIC ASIA PACIFIC
 Singapore
 Tel: +65-6391-1420 Fax: +65-6297-5424
 E-mail: info@oceanicasia.com.sg

OCEANIC JAPAN
 Yokohama Kanagawa-Prev, Japan
 Tel: 03-5651-9371
 E-mail: mamoru@jecee.com

OCEANIC HAWAII and MICRONESIA
 Kapolei, Hawaii
 Tel: 808-682-5488 Fax: 808-682-1068
 E-mail: lbell@oceanicusa.com

GEO® 2
DIVE COMPUTER
OPERATING MANUAL